

WELDING CATALOGUE 2025

What's New

WHAT'S NEW 2025



1. Color **unification**
2. Improved customer service: pre-assembled arms and improved packaging
3. New mobile units **W3 pending (March 2025)**
4. New mobile units **MONO and MONO PLUS W3**
5. New self-cleaning mobile units **UNI 3.2 «upgraded»**
6. **Start/stop** device as standard on all self-cleaning models
7. **KIT Start/Stop** as optional on all mobile units with digital control
8. **KIT Armolight** for all arms
9. KIT Arm & Fan
10. **Armospark**
11. New **special** extraction **hoods**
12. New welding mask with PAPR - **AER FLOW SAFE V4 PRO**
13. **BAZ**: plug&play downdraft benches complete with filters and fan

1. UNIFICATION OF THE COLOR

- Confirmation of **red** and **black** as the company's identifying colours.
- Red like the *passion* that distinguishes us for what we do and for the *love* we put into designing and proposing cutting-edge solutions for improving the quality of air in the workplace, always keeping faith with our motto "**Breathe Good Air**"

2. IMPROVED CUSTOMER SERVICE

- From **2025** we will supply the ARMOFLEX and ARMOTECH arms for both mobile and wall versions in pre-assembled version. **Only 1 box**. A few minutes to connect it to the unit or to the wall!
- Packaging changes: to reduce transport inconvenience, the wheeled models will be packaged with wheels to be mounted so that the machines can be shipped on standard and more stable pallets.

3. NEW MODELS W3 CERTIFIED



MONO PLUS W3

- ✓ W3 pending ****March 2025****
- ✓ Mobile unit with single cartridge filter
- ✓ Ideal for welding fumes
- ✓ Light use
- ✓ Filter W3 certified > 99% (6,3 m²)
- ✓ Sintex Plus - High Efficiency Corrugation and Nanofiber lining
- ✓ 1,1 Kw 230V / 1100m³/h
- ✓ Fast manual filter cleaning without removing it
- ✓ Optional: Kit armolight / Anti-spark



UNI 2 C W3

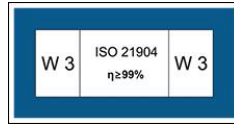
- ✓ W3 certified
- ✓ Mobile unit with single cartridge filter
- ✓ Ideal for welding fumes
- ✓ Regular use
- ✓ Filter W3 certified > 99% (12,55 m²)
- ✓ Ultra-Web® - High Efficiency Nanofibre filter
- ✓ 1,1 Kw 230V / 1100m³/h
- ✓ Optional: Kit Start/Stop, Kit Armolight, Active carbon filter, Anti-spark



UNI 3.2 W3

- ✓ W3 pending ****March 2025****
- ✓ Self cleaning mobile unit with double cartridges
- ✓ Ideal for welding fumes, grinding and manual plasma cutting
- ✓ Start/Stop as standard
- ✓ Intensive use
- ✓ Filter W3 certified > 99% (12,6 m²)
- ✓ Sintex Plus - High Efficiency Corrugation and Nanofiber lining
- ✓ 1,5 Kw 230V / 1400m³/h
- ✓ Optional: Kit Start/Stop, Kit Armolight, Active carbon filter, Anti-spark

4. NEW MONO / MONO PLUS W3

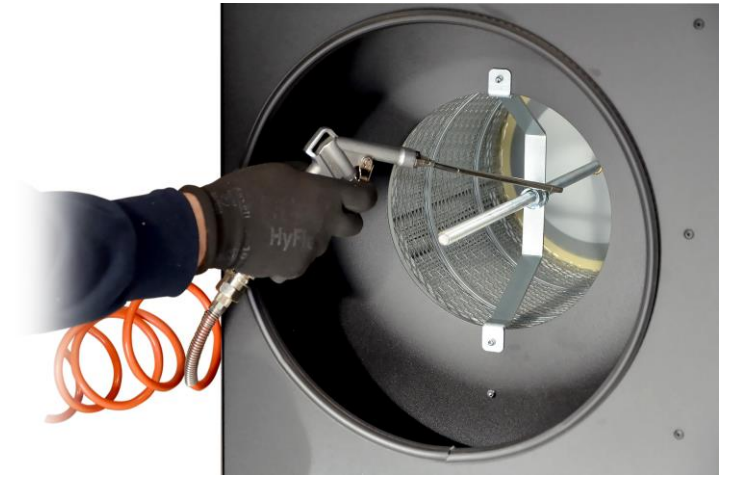


MONO PLUS W3

- ✓ W3 pending ****March 2025****
- ✓ Mobile unit with single cartridge filter
- ✓ Ideal for welding fumes
- ✓ Light use
- ✓ Filter W3 certified > 99% (6,3 m²)
- ✓ Sintexx Plus - High Efficiency Corrugation and Nanofiber lining
- ✓ 1,1 Kw 230V / 1100m³/h
- ✓ Fast manual filter cleaning without removing it
- ✓ Optional: Kit armolight / Anti-spark

MONO

- ✓ Mobile unit with single cartridge filter
- ✓ Ideal for welding fumes
- ✓ Light use
- ✓ Filter class M > 99% (9 m²)
- ✓ 0,55 Kw 230V / 900m³/h
- ✓ Fast manual filter cleaning without removing it
- ✓ Optional: Kit armolight / Anti-spark



Fast filter cleaning with compressed air without removing the filter

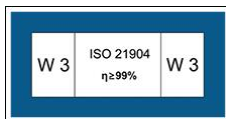
5. NEW 3.2 «UPGRADED»



AUTOMATIC
CLEANING



FAN ON DEMAND
ENERGY SAVING



WELDING



GRINDING



UNI 3.2 / UNI 3.2 W3 1 or 2 arms

- ✓ W3 pending ****March 2025****
- ✓ Self cleaning mobile unit with double cartridges
- ✓ Ideal for welding fumes, grinding and manual plasma cutting
- ✓ **Intensive use**
- ✓ **Start/Stop as standard** to guarantee higher frequency of automatic cleaning
- ✓ Digital control: clogged filter alarm, lack of air, hour counter, alarm reset or filter change history.
- ✓ **New air tank** for better filters' cleaning
- ✓ Filter W3 certified > 99% (12,6 m2)
- ✓ Sintexx Plus - High Efficiency Corrugation and Nanofiber lining
- ✓ 1,5 Kw 230V / 1400m3/h (1000x2: 2000m3/h)
- ✓ Optional: Kit Start/Stop, Kit Armolight, Active carbon filter, Anti-spark
- ✓ Arm model Armotech up to 4 meters/ diam 160 mm
- ✓ Dual arms: same diameter 160mm

6-7. START/STOP

UNI 3.2 / UNI 4 / ICAP 4.2
(self-cleaning models)

Standard



RANGE UNI 2 + ICAF

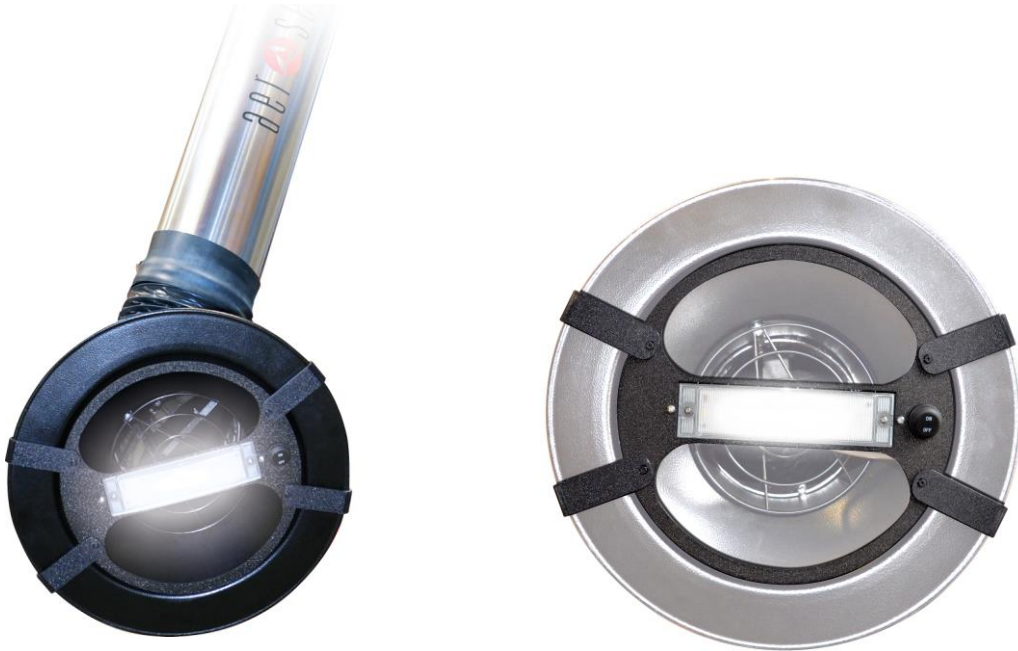
Available as KIT to be
sold/purchased at any time



How does it works?

- An internal or external device reads the magnetic field of the welding machine's ground cable. When the electric arc ignites, the device will start the purifier's fan. If the electric arc goes out, the device will wait 60 seconds (1min) before turning off the fan.
- For **self-cleaning** models , turning off the fan during welding automatically activates a further self-cleaning cycle of the cartridges, significantly improving their effectiveness.

8. KIT ARMOLIGHT



KIT ARMOLIGHT

- ✓ **New lighting Kit Illuminazione for extracion hood**
- ✓ High intensity LED
- ✓ ON/OFF switch integrated in the light support
- ✓ Kit available for all type of arms (mobile units, stationary units or single arm)

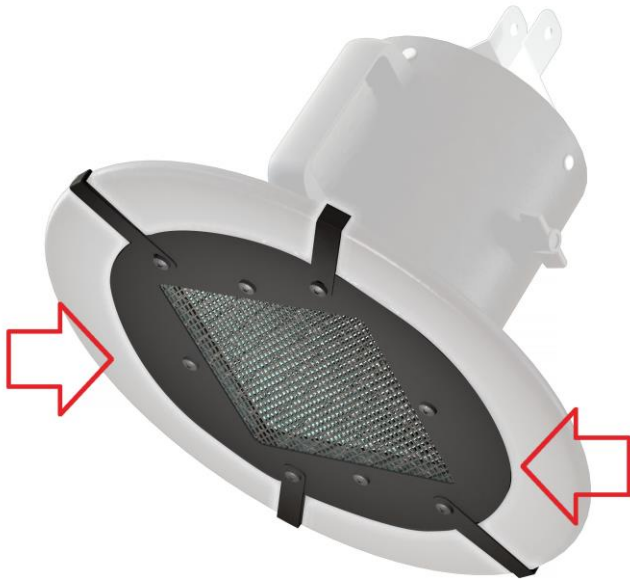
9. KIT ARM & FAN



KIT ARM & FAN

- ✓ We have created **4 arm + fan kits** to speed up offers to customers who do not require filtration
- ✓ EV 15 single or three-phase fan
- ✓ 4 meter Armoflex or Armotech arm
- ✓ The KIT code includes fan, arm, support bracket for wall fixing

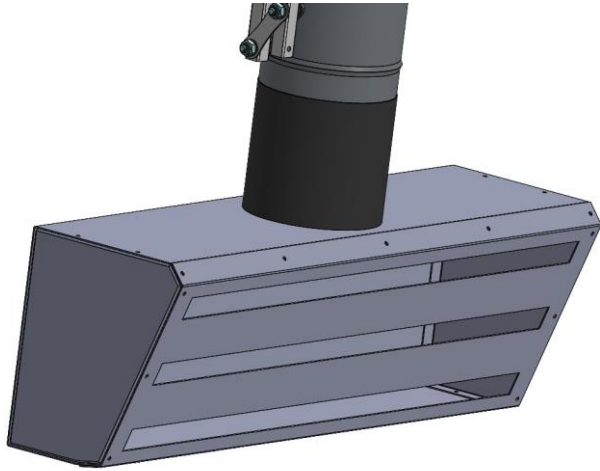
10. ARMOSPARK



ARMOSPARK

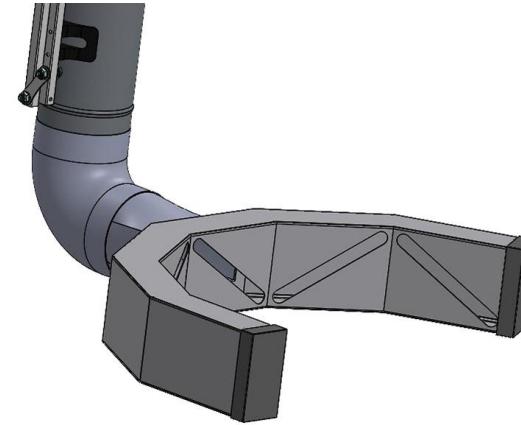
- ✓ Anti-spark grid to be applied on the "round" hood
- ✓ Suggested for all cases where the end customer can also grind and not only weld.
- ✓ **Warning:** the grid helps protect the filters, but does not make a welding fume only model suitable for intensive grinding!!

11. SPECIAL EXTRACTION HOOD



RECTANGULAR HOOD

- ✓ Can be combined with mobile unit or wall arms
- ✓ 3 widths available: 400, 600, 800mm
- ✓ Ideal for bench work where you want to cover a larger area without forcing the welder to continuously move the hood



DRUMS EXTRACTION HOOD

- ✓ Can be combined with mobile unit or wall arms
- ✓ 4 widths available : 600, 800, 1000, 1200 mm
- ✓ Special hood to be used in particular applications where you want to "wrap" the product to be welded (e.g. drums)

12. AER FLOW SAFE V4 PRO



AER FLOW SAFE V4 PRO

- ✓ **Auto-darkening welding mask with PAPR system (Power Air Purifying Respirator)**
- ✓ **Ideal for welding and grinding**
- ✓ **Wide visibility for the welder**
- ✓ **Optical filter class 1/1/1/1**
- ✓ **Filtration efficiency 99,997%**
- ✓ **Respiratory protection factor TH3**



12. AER FLOW SAFE V4 PRO



OPTICAL FILTER CLASS– Dettagli

The lens (optical filter) is rated from 1 to 3, on four classes of optical clarity, with 1 being the highest and 3 the lowest.

1 / 1 / 1 / 1

- Angle variation
- Light consistency
- Light diffusion
- Optical quality

- ✓ Optical quality: level of visibility definition (level of image distortion created by the lens).
- ✓ Light diffusion: Indicates the level of visual clarity. Impurities in the filter lens are analyzed.
- ✓ Light Consistency: Indicates the variation of the light transmission factor that determines the degree of darkening uniformity across the entire surface of the lens.
- ✓ Angle variation: Indicates the angle variation of the light transmission factor. The degree of clarity is evaluated through an angled view.

13. PLUG & PLAY DOWNDRAFT BENCHES



BAZ

- ✓ Downdraft benches «stand alone»
- ✓ **Complete with filters and fan**
- ✓ Ideal for welding and grinding
- ✓ Extraction from the worktop and front wall
- ✓ The side panels can be removed to allocate bigger workpieces.
- ✓ 4 measure available (100 cm, 150cm, 200cm, 300cm)
- ✓ Optional: wheels
- ✓ Filters upgrade: H13 in the discharge