



# CATHEXIS®

## CathexisVision®

Video Surveillance Management Solutions

The CathexisVision IP Video Management Software suite provides an extensive range of sophisticated solutions to satisfy all security and infrastructure management requirements across a wide variety of market sectors. These sectors include retail, banking, hospitality, mining, education campuses, residential and commercial estates, manufacturing, healthcare, transport, logistics and city surveillance among many others.

- Open Architecture Video Surveillance Management Platform
- Enterprise, Multi-Site Architecture
- Video Analytics
- Automatic License Plate Recognition (ANPR)
- 3rd Party System Integration
- Sophisticated Command Centre Environment
- Advanced Video Search

Increase Return On Investment



CathexisVision®

Beyond Surveillance





## IP Camera Support

CathexisVision supports most popular brands of IP cameras using both ONVIF and proprietary protocols via a true UPnP interface. Integration includes MJPEG, H.264, H.265, MXPEG support, multiple video streams, audio, input/output control, on-camera (Edge) video analytics as well as 360 and 180 degree “fisheye” camera de-warping algorithms. A complete list of integrated cameras can be obtained from our website [www.cathexisvideo.com](http://www.cathexisvideo.com).



## Event and Action Management

The CathexisVision software offers intelligent configuration of events and the actions that can be initiated in response to these events.

Events can be triggered from inputs, video analytics, or integrated third-party system triggers. Rules-based configuration enables automatic responses associated with these specific events to be performed, including switching cameras to monitors, sending emails, controlling relay outputs, sending alarms to a control room, playing audio clips and many others.



## Third Party Systems Integration

Third party systems such as alarm and fire panels, access control, point-of-sale, building and plant management systems, and perimeter monitoring equipment can be integrated with the Cathexis software to provide an extremely powerful single user interface, with video verification of events that occur on these systems. Rules-based actions can then be initiated from the event data.



## Storage Solutions

CathexisVision provides complete flexibility when it comes to choosing your storage solution. This includes support for Network Storage systems like NAS and SAN, as well as on-server storage with various RAID configurations. Multiple, user defined databases enable clients to maximise storage effectiveness and flexibility. CathexisVision also has the ability to store critical video to more than one database simultaneously for ultimate redundancy.



## Advanced Video Search



SnapSearch



MotionSearch



Activity Trails

Advanced Video Search features are sophisticated tools that dramatically speed up the ability to review recorded video footage. They allow operators to find specific, relevant footage through three highly customisable tools: SnapSearch, MotionSearch and Activity Trails. SnapSearch uses linked snapshots (thumbnails) to “drill-down” very quickly to time-related incidents, even in very busy areas and MotionSearch will automatically find recorded video footage associated with motion in selected areas. Our unique Activity Trails enable you to display an overlay map showing the latest activity in all areas of the selected camera view, enabling immediate navigation to the selected area of activity.



## Adjacent Camera Mapping

Adjacent Camera Mapping displays footage from the camera directly adjacent to the one that the operator is focusing on, to keep track of a developing situation. This feature is designed for large-scale applications where speed and efficiency is vital. It allows operators to maintain accurate viewing capabilities and pinpoint incidents as or before they arise.



## Multi-server Site Management

The CathexisVision Premium software provides a true site based management infrastructure, with multiple recording and viewing servers, cameras, and storage all being managed from a centralised location. The easy-to-use graphical user interface provides the operator with seamless access to cameras and resources anywhere on or off site.



## Enterprise Multi-site Management

The CathexisVision site management software provides authentic remote client system management. This includes performing all system functions from set-up to viewing, reviewing and system management, from anywhere across the globe. We provide many compression techniques to provide efficient streaming of video across limited bandwidth infrastructures.

Retail



Banking



Education





## Access Rights Management

Large sites often require multiple control rooms and tiers of management. Therefore, for effective site management it is important to control the access levels of the various users. CathexisVision software offers multiple levels of users each with a unique username and password. Administrators can manage users across the site, or across multiple sites, from a central location.



## Alarm Management

Large installations may contain hundreds of cameras which are impossible to monitor effectively on a continuous basis. In this scenario a “black-screen” monitoring approach is used, in which the system generates an alarm that guides the user to the camera that should be monitored.

The CathexisVision Alarm Manager software provides this interface with complete alarm logs and the ability to “escalate” alarms to supervisors. A comprehensive reporting facility is included in the software. Similarly, when monitoring multiple sites from a central location, the alarm manager receives alarms from the various sites and provides an automatic connection to the sites initiating the alarm. Alarm video previews with pre- and post-event clips can be automatically downloaded and archived at the control room.



## Camera Parameter Cloning (CPC)

Our CPC feature makes it easy to apply camera settings across multiple cameras. Settings like multiple video streams, resolutions, frame rates, bitrates and others are easily copied and pasted from one reference camera to as many of your site’s cameras as you wish, thereby reducing site setup times significantly.



## Setup Wizards

To make setup easier, and reduce the probability of error, Cathexis has introduced new setup “Wizards”. These wizards logically guide clients through the setup process for cameras, databases, recording, analytics, events and event actions.



## Video Wall

The Video Wall facility in CathexisVision provides intelligent management of the video that is displayed on multiple monitors. This provides the ability to: manage and perform camera and layout sequences; automatically switch cameras to monitors (or panels within monitors) upon a specified event; automatically or manually control monitor layouts via an interactive mimic panel and to review cameras on the video wall. With CathexisVision your control room environment can be tailored to suit your needs.



## ANPR (Automatic Number Plate Recognition)

CathexisVision provides an Automatic Number Plate Recognition (ANPR) solution for both low- and high-speed applications. License plates are recognised and stored in a database with associated video footage. These license plates can be compared to blacklists or whitelists in real-time, which provides the ability to take appropriate action against these comparisons. So whether you have a Parking/Access Control application or a high-speed freeway detection requirement, CathexisVision has the solution for you.



## CatMobile

Our mobile device applications enable you to remotely view cameras from your mobile device. CatMobile enables you to view up to four cameras simultaneously, review recorded footage from selected cameras and control PTZ cameras from the user interface. We also perform automatic scaling of video resolution to suit the bandwidth available to your phone. CatMobile easily enables you to connect to multiple sites wherever you may be in the world.

### Hospitality



### Mining



### City Surveillance







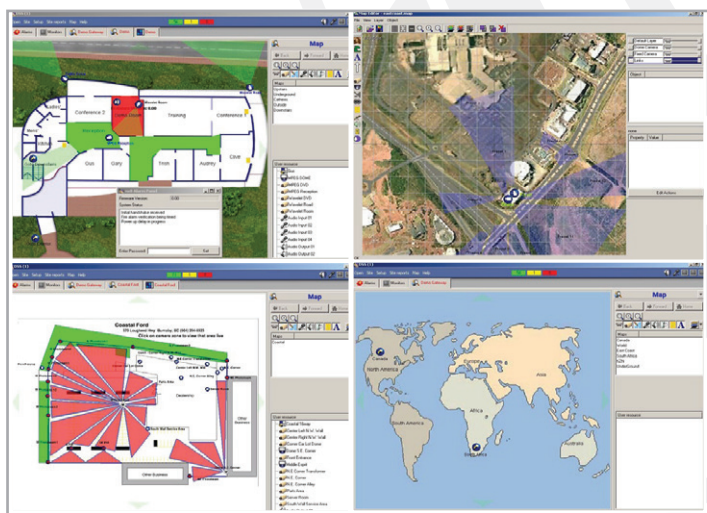
## CatObserver

CatObserver is a feature that enables a selected viewing monitor to be configured as a “virtual camera” so that all the activity viewed on this computer screen is recorded. Advantages include easy archiving and access to all that an operator has viewed during an incident without having to archive or access multiple cameras’ footage.



## Map Interface

Cathexis's maps feature multi-layered, hierarchical, interactive interfaces. This provides representation, and control, of a site and its resources. These resources include cameras, input/output devices, access control doors, alarm/fire panel points, and more, all displayed on a graphical interface. The map also provides the ability to represent, and control, preset PTZ dome positions from the GUI; drag-and-drop cameras from the map to selected monitors; control selected integrated third party systems.



## Video Analytics

CathexisVision provides its own analytics suite as well as the facility to integrate on-camera (Edge) analytics. Algorithms provided by Cathexis include a multi-zone “SMART” learning motion detection algorithm, abandoned or removed object detection, loitering, speed, direction, line crossing and queue length analysis. Our user friendly interface allows you to easily configure the algorithms, using both live and recorded video footage.



## Diagnostics

CathexisVision has an extremely powerful diagnostics suite. Apart from our already powerful “health monitoring”, we provide tools to assist the installers to analyse the whole system environment, both in real time and historically. Monitoring such parameters as network camera video streaming performance, recording bitrates, live viewing statistics, and network throughput, enables our partners to easily troubleshoot problems on-site. This provides real intelligence on the technical integrity of the solution.



## Health Monitoring

We regard system “up-time” as paramount. The Cathexis Health Manager provides real-time analysis of the system and can be configured to send alarms to selected recipients if problems are detected. Camera failures, hard drive analysis, environmental conditions, communication integrity, software errors, and many more parameters are monitored to provide peace of mind. The software also provides full reporting capability to enable you to generate system status reports.



## Failover

CathexisVision provides complete redundancy by way of its elegant failover feature. This ensures that if any recording and video management server fails on a site, a “failover server” will automatically perform the tasks of the failed server. To add to this, when the failed server is replaced, all configuration and recorded footage will be automatically ported back to the replacement server. This ensures that your site runs seamlessly through the whole process.



## Upgradeable Architecture

The architecture of the CathexisVision software provides clients with the flexibility to upgrade and expand their system or add features whenever necessary. So, whether the camera population needs to expand, the recording servers need to increase, or more features are required, the CathexisVision solution is easily upgradable to meet the new demands.

## Logistics & Manufacturing



## Healthcare



## Transport



# CathexisVision 2018 Package Comparison

● Feature included      ○ Available with license

Features	LITE	CORE	PROFESSIONAL	PREMIUM
	Single server package	Single server product	Medium to large site	WAN/large site
Upgradeable (To Higher Package)	–	•	•	•
<b>CAMERA AND SERVER LIMITS</b>				
Max IP Cameras Per Site	48	48	150	Unlimited
Max Recording Servers Per Site	1	1	Unlimited	Unlimited
<b>NETWORK CAMERA SUPPORT</b>				
MJPEG, H.264, H.265 and MXPEG Support	•	•	•	•
ONVIF Support	•	•	•	•
Multiple Video Streaming (Per Camera)	•	•	•	•
Multicast Support	•	•	•	•
UPnP Support	•	•	•	•
Audio and I/O Support	•	•	•	•
Fisheye De-warping	•	•	•	•
<b>CLIENT CONNECTIONS</b>				
Max Simultaneous Connections (Including Local)	3	7	10	Unlimited
Viewing & Setup Client	•	•	•	•
Mobile Client Support	•	•	•	•
<b>AUDIO</b>				
Audio Recording & Bi-directional	•	•	•	•
<b>VIDEO ANALYTICS</b>				
Basic VMD	•	•	•	•
Cathexis SMART Motion Detection	○	○	•	•
Advanced Analytics Suite	○	○	○	○
Edge Analytics Support	•	•	•	•
<b>STORAGE</b>				
Local Storage (On Recording Server)	•	•	•	•
Network Support	•	•	•	•
Edge Storage	•	•	•	•
<b>EVENT TRIGGERS</b>				
Physical Input Triggers	•	•	•	•
On-Server Analytics Triggers	•	•	•	•
Edge Analytics Triggers	•	•	•	•
Third Party System Event Triggers	○	○	○	○
Technical Alarm Triggers	•	•	•	•
<b>EVENT ACTIONS</b>				
Record Pre-and Post-events	•	•	•	•
I/O Output Control	•	•	•	•
Send SMS and Email	–	•	•	•
Send Alarm/Event to Alarm Management Gateway	–	•	•	•
Video Wall Control	•	•	•	•
Play Audio Clip	•	•	•	•
PTZ - Move to preset location on event trigger	–	•	•	•
Send Technical Alarms to Alarm Gateway	•	•	•	•
<b>ANPR (AUTOMATIC NUMBER PLATE RECOGNITION)</b>				
Low and High Speed	○	○	○	○
<b>SMART SEARCH</b>				
Snap Search	•	•	•	•
Motion Search	•	•	•	•
Activity Trails	•	•	•	•
<b>ADJACENT CAMERA MAPPING</b>				
Adjacent Camera Mapping	•	•	•	•
<b>INTEGRATION</b>				
Third Party Systems Integration	○	○	○	○
API Integration	•	•	•	•
<b>VIDEO WALL</b>				
Mimic Panel	○	○	○	•
Camera and Layout Tours	○	○	○	•
Automatic Camera and Layout Switching on Events	○	○	○	•
<b>CATOBSERVER (MONITOR RECORDING)</b>				
CatObserver (Monitor Recording)	○	○	○	○
<b>ALARM GATEWAY INTEGRATION</b>				
Technical Alarms	•	•	•	•
Event Alarms	–	•	•	•
Alarm Escalation and Tracking	•	•	•	•
<b>MAPS</b>				
Interactive Map Support	○	○	○	•
<b>FAILOVER</b>				
Redundant Failover Server/s Support	–	–	○	○
<b>REPORTING</b>				
System Health Reports	•	•	•	•
Customizable Management Reports	•	•	•	•
<b>USER MANAGEMENT</b>				
Access Rights Control	•	•	•	•
User Logs	•	•	•	•

Disclaimer: While Cathexis has made every effort to ensure the accuracy of this document, there is no guarantee of accuracy, neither explicit, nor implied. Specifications are subject to change without notice.



 - Product Distribution

 - Regional Offices

Cathexis products are used in many regions around the globe, including Europe, The United Kingdom, Australia, India, USA, Africa, South Africa, Asia and The Middle East. We have provided solutions for many market verticals, including Retail, Mining, Commercial, Manufacturing, Government, Transport, Healthcare, Logistics, Banking and many others.

Our solutions are spreading into new regions at an ever increasing rate, so if you would like to find out more about our products, or would like to get in touch with a Distributor or Installer in your area, please contact us through one of our offices listed below:

#### Head Office

[www.cathexisvideo.com](http://www.cathexisvideo.com)  
[info@cathexisvideo.com](mailto:info@cathexisvideo.com)  
Phone: +27 31 240 0800

#### Cathexis Africa

[www.cathexisvideo.com](http://www.cathexisvideo.com)  
[info@cathexisvideo.com](mailto:info@cathexisvideo.com)  
Phone: +27 31 240 0800

#### Cathexis Europe

[www.cathexisvideo.com](http://www.cathexisvideo.com)  
[info@cathexiseu.com](mailto:info@cathexiseu.com)  
Phone: +44 845 257 7277

#### Cathexis Middle East

[www.cathexisvideo.com](http://www.cathexisvideo.com)  
[infome@cathexisvideo.com](mailto:infome@cathexisvideo.com)  
Phone: +971 55 566 6935

