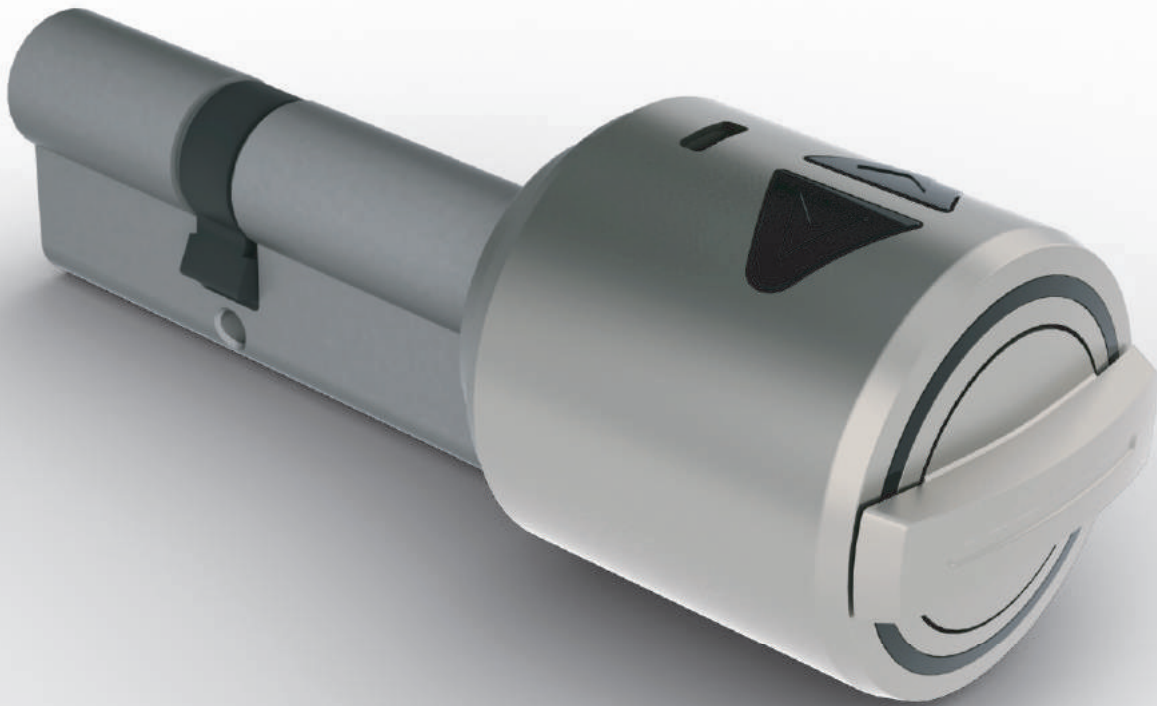


Smartest, Strongest, Smallest **MOTORIZED CYLINDERS**



Motorized Cylinder

Window and Door Alarm

Wireless Controllers

Electromechanical Lock



MOTORIZED CYLINDER

Rechargeable Battery Powered

DIMENSIONS	Diameter: 48 mm / Length: 60 mm (without cylinder)
MATERIAL	ABS, zamak, PC/PA
POWER	Rechargeable lithium battery
COMMUNICATION	Secured wireless communication, bluetooth, z-wave.
CONTROLLERS	Smartphone, wireless fingerprint reader, remote controller, wireless keypad, wireless card reader, home automation interface.
COMPATIBILITY	All kind of doors with cylinder operated lock
INSTALLATION	Easy installation with 1 screw
OTHER	12 mm telescopic extending cylinder structure (patented), control buttons and led operation display on device, coreless motor option.

BATTERY LIFE

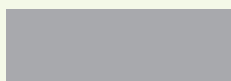
Results of laboratory tests on 2 turns lock with a usage of 10 operations/day

	Utopic R Rechargeable	Utopic S 3x CR123	Utopic 2 5x AA
RF or BLE	90 days	220 days	300 days
RF and BLE	60 days	No BLE	200 days

Results of laboratory tests on 2 turns lock with 10 operations daily.



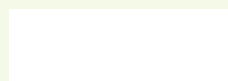
satin nickel painting



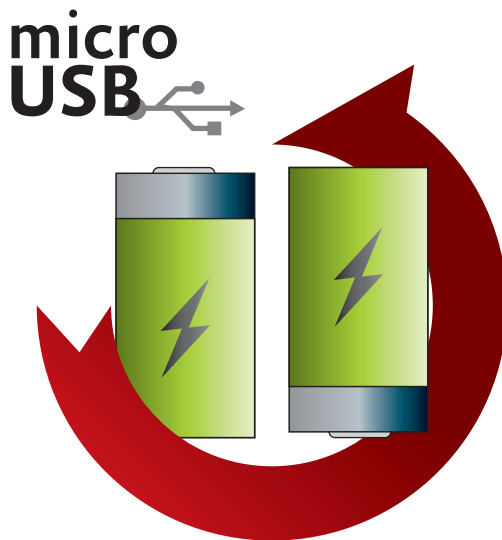
grey



black



white



RECHARGABLE BATTERIES

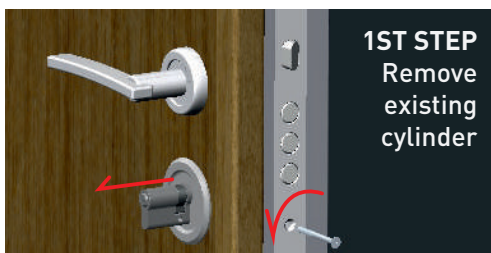
Utopic R is powered by rechargeable lithium batteries, That means, you can use your system for years without changing batteries.

Just charge via micro USB port and enjoy your keyfree living! It can be controlled or powered via this port as well.



INTEGRATED CONNECTIVITY

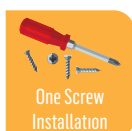
Bluetooth low energy or z-wave capabilities are available for Utopic R. That means, besides DESi wireless controllers like fingerprint reader, keypad etc. you can use your smartphone or smart home system to control Utopic R.



EASY INSTALLATION

Utopic has the same installation process of ordinary cylinders. You can remove old cylinder and install Utopic with one screw only.

It is suitable for all the doors which have cylinder operated lock.



MOTORIZED CYLINDER

Lithium Battery Powered

- DIMENSIONS** | Diameter: 50 mm / Length: 60 mm (without cylinder)
- MATERIAL** | Engraved alluminum (knob), zamak, PC, PA
- POWER** | 3 x CR123A lithium battery
- COMMUNICATION** | Secured wireless communication.
- CONTROLLERS** | Wireless fingerprint reader, remote controller, wireless keypad, wireless card reader, home automation interface.
- COMPATIBILITY** | All kind of doors with cylinder operated lock.
- INSTALLATION** | Easy installation with 1 screw.
- OTHER** | 12 mm telescopic extending cylinder structure (patented), coreless motor option.

BATTERY LIFE

Results of laboratory tests on 2 turns lock with a usage of 10 operations/day

	Utopic S 3x CR123	Utopic R Rechargeable	Utopic 2 5x AA
RF or BLE	220 days	90 days	300 days
RF and BLE	No BLE	60 days	200 days

Results of laboratory tests on 2 turns lock with 10 operations daily.



inox finish



polished
chrome



brushed
chrome



polished
brass



black
nickel



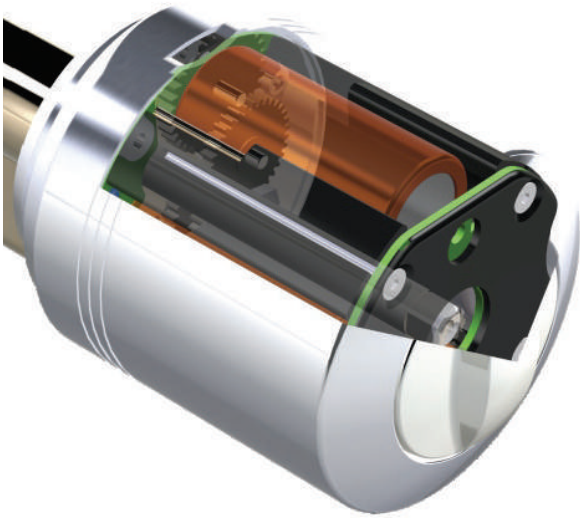
white
painting



satin nickel
painting



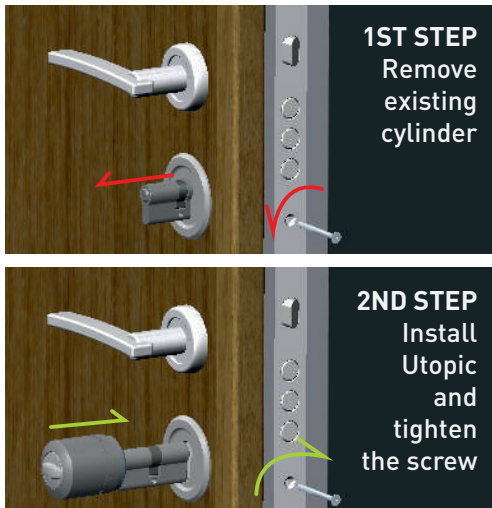
black
painting



MINIMALIST & POWERFUL

Utopic S is made from a single block of aluminum through a sophisticated milling process.

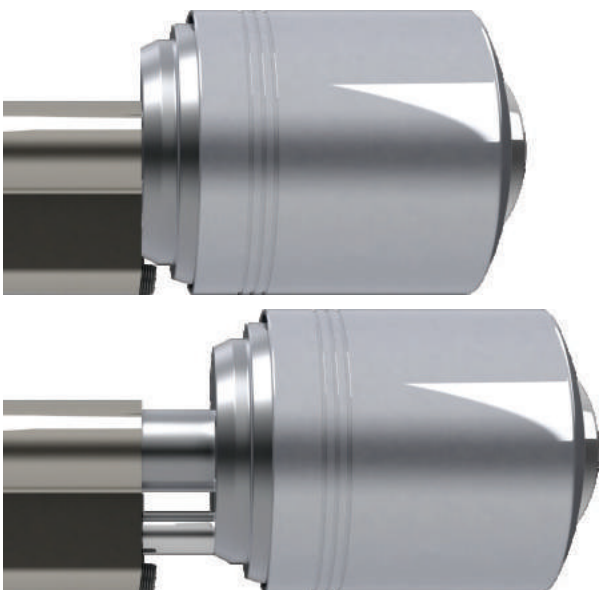
All the control board, wireless communication components, gear motor and batteries fit into 50 mm knob.



EASY INSTALLATION

Utopic has the same installation process of ordinary cylinders. You can remove old cylinder and install Utopic with one screw only.

It is suitable for all the doors which have cylinder operated lock



PATENTED TELESCOPIC EXTENDING CYLINDER STRUCTURE

Different doors use different length of cylinders due to thickness varieties.

Thanks to its intelligent design, the cylinder of Utopic S can be extended by 12 mm. This feature helps to solve thickness related problems in an easy way.



MOTORIZED CYLINDER

Alkaline Battery Powered

- DIMENSIONS** | Diameter: 60 mm / Length: 72 mm (without cylinder)
- MATERIAL** | Engraved alluminum (knob), zamak, PC, PA
- POWER** | 5 x AA alkaline battery
- COMMUNICATION** | Secured wireless communication, bluetooth, z-wave.
- CONTROLLERS** | Smartphone, wireless fingerprint reader, remote controller, wireless keypad, wireless card reader, home automation interface.
- COMPATIBILITY** | All kind of doors with cylinder operated lock.
- INSTALLATION** | Easy installation with 1 screw.
- OTHER** | 6 mm extending cylinder, Coreless motor option.

BATTERY LIFE

Results of laboratory tests on 2 turns lock with a usage of 10 operations/day

	Utopic 2 5x AA	Utopic R Rechargeable	Utopic S 3x CR123
RF or BLE	300 days	90 days	220 days
RF and BLE	200 days	60 days	No BLE

Results of laboratory tests on 2 turns lock with 10 operations daily.



inox finish



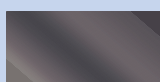
polished
chrome



brushed
chrome



polished
brass



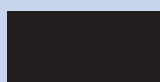
black
nickel



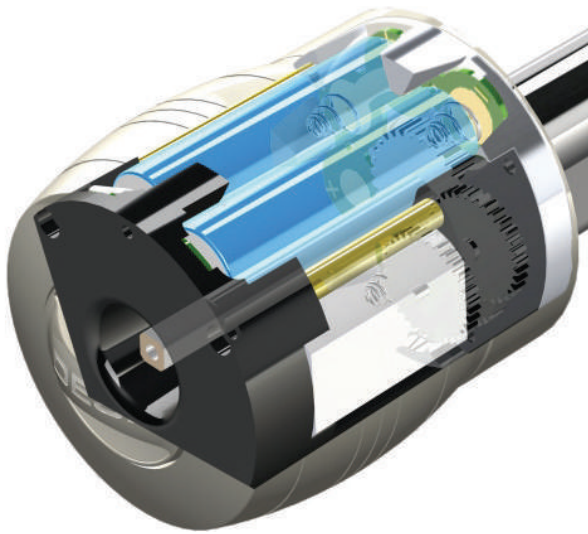
white
painting



satin nickel
painting



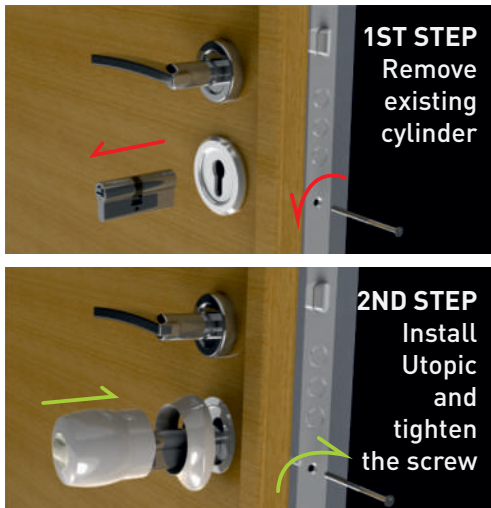
black
painting



EXTENDED BATTERY LIFE

Without changing batteries, Utopic 2 can operate up to 380 days on a two turns mortise lock with 6 operations per day..

It uses standart AA size batteries and you can change them easily when needed.



EASY INSTALLATION

Utopic has the same installation process of ordinary cylinders. You can remove old cylinder and install Utopic with one screw only.

It is suitable for all the doors which have cylinder operated lock.



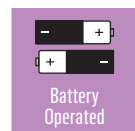
TOTALLY WIRELESS

Bluetooth low energy or z-wave capabilities are available for Utopic 2. That means, besides DESi wireless controllers like fingerprint reader, keypad etc. you can use your smartphone or smart home system to control Utopic 2.

ELECTROMECHANICAL MORTISE LOCK

Alkaline Battery Powered

DIMENSIONS	113 x 300 x 28 mm
MATERIAL	Galvanized Steel, ABS, PC/PA
POWER	4 x AA alkaline battery
BATTERY LIFE	Up to 450 days with 10 operations daily.
COMMUNICATION	Secured wireless communication, bluetooth, z-wave.
CONTROLLERS	Smartphone, wireless fingerprint reader, remote controller, wireless keypad, wireless card reader, home automation interface.
SENSORS	Double Protection; magnetic switch and shock sensor
COMPATIBILITY	All kind of doors.
INSTALLATION	The same installation procedure with a mortise lock.
OTHER	Patent pending two axis moving latch, additional security lock which is able to work together with u-lock.



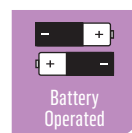
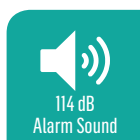


**114
dB**

MORTISE LOCK WITH BUILT-IN ALARM

Alkaline Battery Powered

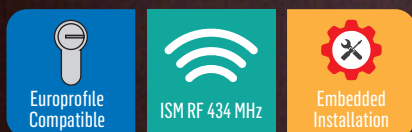
DIMENSIONS	113 x 300 x 28 mm
MATERIAL	Galvanized Steel, ABS, PC/PA
POWER	2 x AA alkaline battery
BATTERY LIFE	3 years standby
CONTROLLERS	Key and Door Handle
SENSORS	Double Protection; magnetic switch and shock sensor
COMPATIBILITY	All kind of doors.
INSTALLATION	The same installation procedure with a mortise lock.
OTHER	114 dB alarm sound, 3 sensitivity levels for shock sensor (adjustable by end user), 2 levels for indication sound (adjustable by end user), no cable connection.



EMBEDDED LOCK CONTROL SYSTEM

Alkaline Battery Powered

DIMENSIONS	Control Box: 250 x 40 x 84 mm Hole Diameter for Fingerprint Reader Installation: 60 mm
MATERIAL	Zamak, ABS.
POWER	4 x C size alkaline battery
BATTERY LIFE	Up to 450 days with 10 operations daily.
COMMUNICATION	Secured wireless communication, parts of product are connected by wires.
FINGERPRINT SENSOR	Optical (500 dpi)
COMPATIBILITY	Doors thicker than 70 mm and works with euro-profile cylinder.
INSTALLATION	Embedded / Flush.

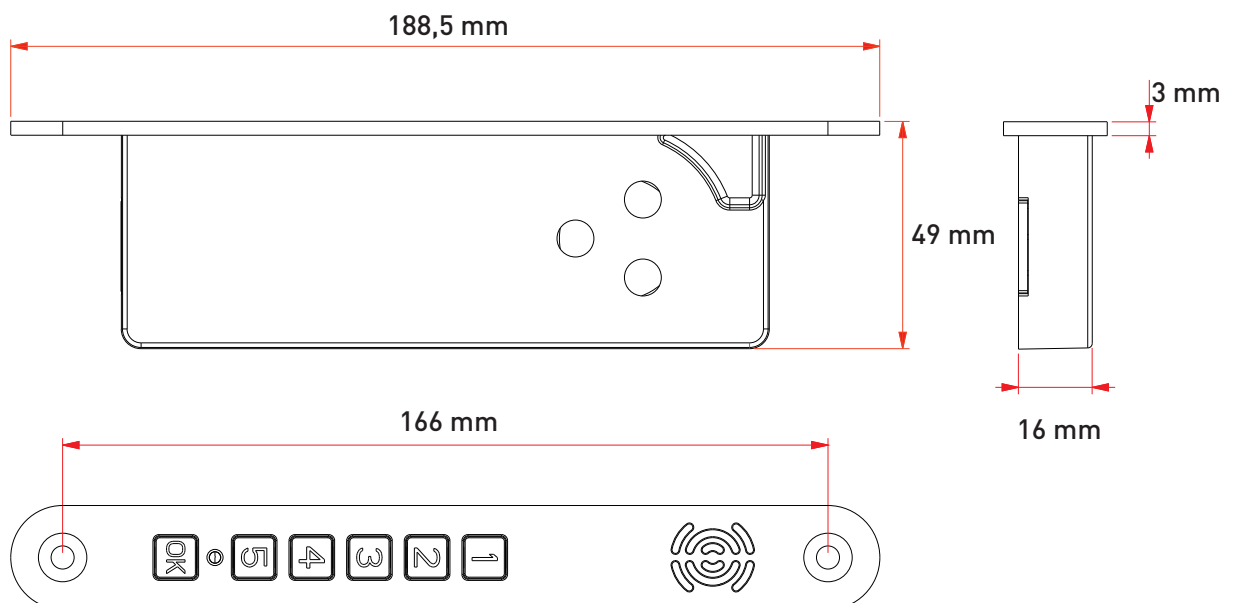
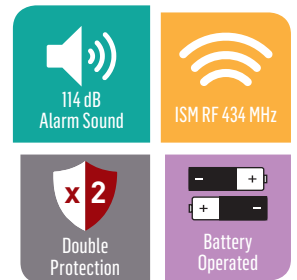


WIRELESS MORTISE ALARM

**114
dB**

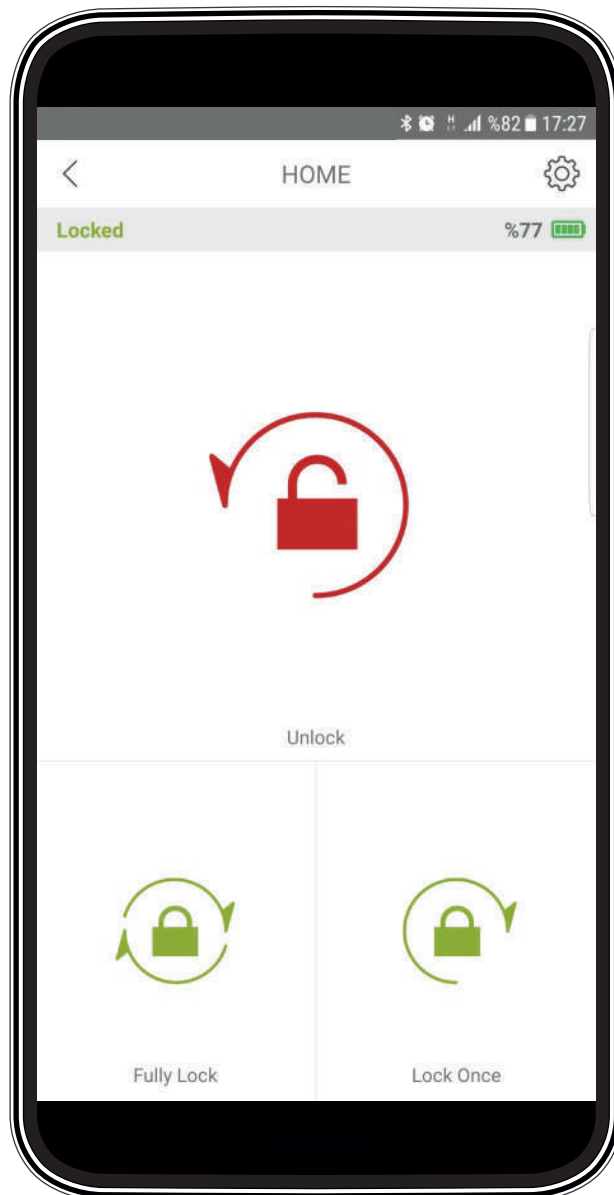


DIMENSIONS	188,5 x 22,5 x 49 mm
MATERIAL	ABS
POWER	2 x AA alkaline battery (2 years stanby)
SENSORS	Double Protection; magnetic switch and shock sensor
SOUND	114 dB
COMPATIBILITY	Most of PVC, aluminum and wooden door and window frames.
CONTROLLERS	Built-in keypad, remote controller (optional)
OTHER	48 mm backset, 3 different models: 23x188,5 mm, 28x220 mm, 30x210 mm




CONTROLLERS

MOBILE APPLICATION



OPEN DOORS WITH YOUR SMARTPHONE

After downloading dedicated mobile app from stores, you can control  **Bluetooth** compatible DESi motorized cylinders or locks via your mobile device.

CONTROLLERS

WIRELESS FINGERPRINT READER



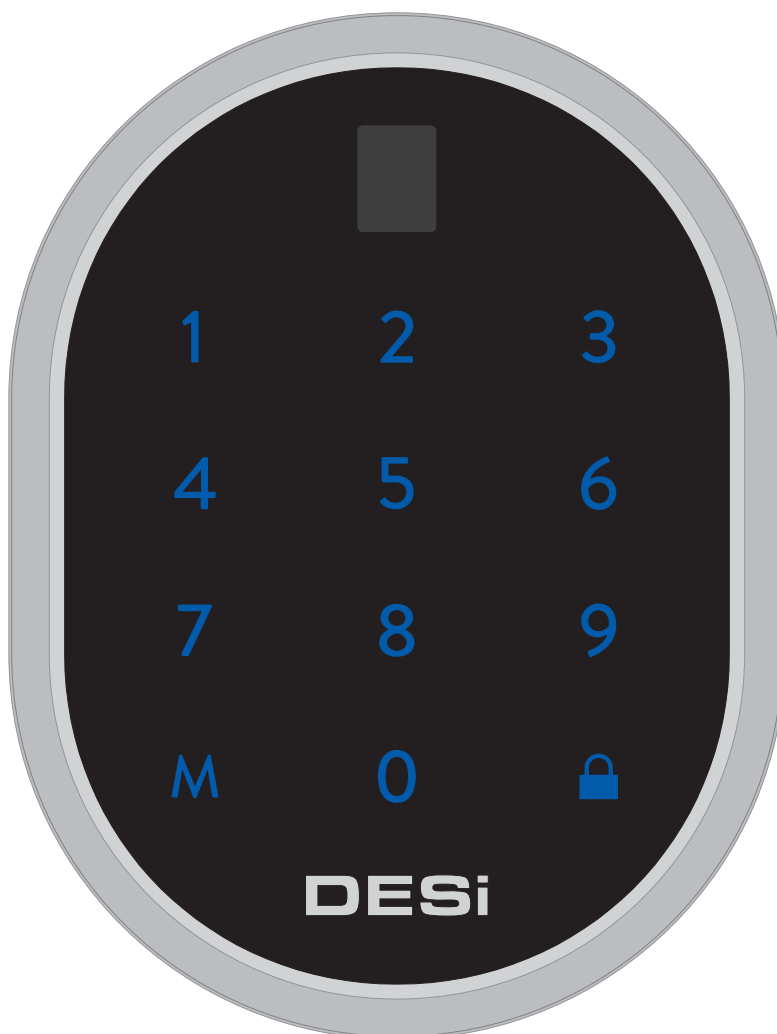
Dimensions	63mm x 84mm x 16,5mm	Power	2x AAA 1,5 V alkaline or lithium battery
Material	ABS, P/C	Communication	High Secure RF communication
Fingerprint Sensor	FPC 1020	Other	Touch buttons, digital display
Fingerprint Memory	Up to 100	Compatible Devices	All of DESi's products

WIRELESS WAY OF FINGERPRINT ACCESS

With its high sensitive sensor and secure wireless structure, this device will provide to use your fingerprints as the key of doors.

CONTROLLERS


WIRELESS KEYPAD



Dimensions	63mm x 84mm x 16,5mm
Material	ABS, P/C
Power	2x AAA 1,5 V alkaline or lithium battery
Passwords	1x Master + 1x User

Communication	High Secure RF communication, Bluetooth (optional)
Other	Touch buttons, digital display
Compatible Devices	All of DESi's products

TOUCH YOUR PASSWORD TO OPEN DOOR

With this wireless touch keypad, you can open your door with password. With its  **Bluetooth** option, it can work as an interface between your mobile and DESi devices.

CONTROLLERS

WIRELESS PROXIMITY CARD / NFC READER



Dimensions | 63mm x 84mm x 16,5mm
Material | ABS, P/C
Card Compatibility | ISO/IEC 14443 A and B, ISO/IEC 15693 and FeliCa, Support for MIFARE technology

NFC Compatibility | NFC-IP1 peer-to-peer support (Passive Initiator Mode)
Power | 2x AAA 1,5 V alkaline or lithium battery
Communication | High Secure RF communication
Compatible Devices | All of DESi's products

TOUCH YOUR CARD TO OPEN DOOR

This wireless controller combines proximity card and NFC reader into one compact device

CONTROLLERS

EMBEDDED WIRELESS FINGERPRINT READER

DIMENSIONS (<i>Cylindrical</i>)	100 x 28 x 28 mm
DIMENSIONS (<i>Rectangular</i>)	100 x 28 x 23 mm
MATERIAL	Zamak, P/C
FINGERPRINT SENSOR	Capacitive
FINGERPRINT MEMORY	Up to 100
POWER	2x AAA size 1,5 V alkaline or lithium battery
COMMUNICATION	High Secure RF communication.
OTHER	Touch buttons, digital led display.
COMPATIBLE DEVICES	All of DESi's products



For R30 mm
Circular
Handles



For 30x30 mm
Rectangular
Handles

FINGERPRINT READER IN DOOR'S HANDLE

Embedded wireless fingerprint reader will provide to use your fingerprints as the key of doors.

CONTROLLERS

EMBEDDED WIRELESS KEYPAD

DIMENSIONS <i>(Cylindrical)</i>	100 x 28 x 28 mm
DIMENSIONS <i>(Rectangular)</i>	100 x 28 x 23 mm
MATERIAL	Zamak, P/C
POWER	2x AAA 1,5 V alkaline or lithium battery
COMMUNICATION	High Secure RF communication
OTHER	Touch buttons, digital display
COMPATIBLE DEVICES	All of DESi's products



For R30 mm
Circular
Handles



For 30x30 mm
Rectangular
Handles

WIRELESS KEYPAD IN DOOR'S HANDLE

With this embedded wireless touch keypad, you can open your door with password.



CONTROLLERS

REMOTE CONTROLLERS



Material	ABS
Power	1x Cr2032 lithium battery
Display	Led activation display, 7 segment display for master remote controller.
Communication	High Secure RF communication
Compatible Devices	All of DESi's products

ONE BUTTON TO UNLOCK, TWO BUTTONS TO LOCK

With high secure remote controllers, locking / unlocking your door is as easy as pressing a button.

CONTROLLERS

WIRELESS AUTOMATION INTERFACE



MATERIAL		ABS
POWER		12V DC or 1x CR2032 lithium battery
COMMUNICATION		High Secure RF communication
COMPATIBLE DEVICES		All of DESi's products

With this wireless interface, DESi products can be controlled through home automation systems. Just connect this wireless interface to a relay output (dry contact) of automation system and that is it! Besides, TTL level control option is also available. Ask for details.

CONTROLLERS

AUTO-LOCKING MODULE



DIMENSIONS		67 mm x 28 mm x 23 mm
MATERIAL		ABS
POWER		1x 2/1AA 3,6V lithium battery
COMMUNICATION		High Secure RF communication
COMPATIBLE DEVICES		All of DESi's products

Use this wireless magnetic switch if you want Utopic-Motorized Cylinder to lock your door automatically when the door is closed.

DESi

UTOPIC products are internationally patented (EP 2365475 B1 / US20130192318 A1) U-LOCK is patent pending.

📍 Topkapı Maltepe Cd.
Anadolu Sk. No: 1 34030
Bayrampaşa İstanbul / TURKEY

www.desi.com.tr
☎ +90212 501 72 72
📞 +90212 576 64 77
www.desi.com.tr
www.utopic.com.tr