

Product catalogue



Passion for metal and design

www.masunt.com



Discover the product diversity of masunt

Whether depositing keys or keycards for properties or devising key handover processes, masunt offers the ideal solution.

masunt products feature high quality stainless steel casings, while innovative software components provide a range of control possibilities.

As a manufacturer of casings, we can also offer custom-made products: enquire about our engineers and production capacities.

Alongside mechanical safe and deposit products, we offer key handover solutions with an electronic code system.

Innovative remote allocation of "Online Codes"

Innovative electronic code allocation works independently of radio/WIFI connections for all E Code models, opening up fresh possibilities for you and your customers. Contact us to arrange integration with your company's software systems and for an individual quotation.



Resatur GmbH provides smart access solutions for industry (e.g. the real estate sector) under the masunt brand

- **Customer-specific** software solutions
- **API** for software integration
- Access to services through smart processes, e.g. automatic access following customer payment
- **SaaS-solutions** on request
- Coming soon: use of **blockchain transactions** for efficient access to properties through key safes or intelligent door locks

Key safe 1120 E Code and 1140 E Code



Product features

- Robust 2mm stainless steel (AISI 304 or AISI 316)
- 2-point lock for secure storage
- Control via 4-digit user code and 8-digit master code
- Additionally: Remote code assignment – without any radio, WiFi or GSM connection
- No electricity connection required, battery-operated
- Suitable for use outdoors
- The safe has 3 key hooks

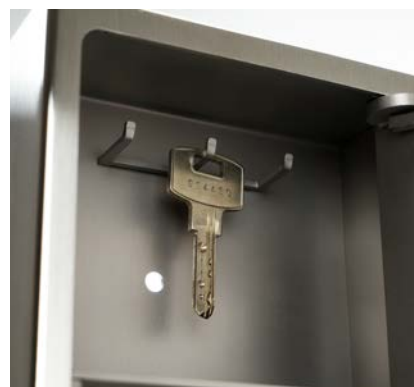
Measurements and weights

external dimensions	179 (H) / 138 (W) / 59 (D) mm
internal dimensions	103 (H) x 130 (W) x 54 (D) mm above, 67 (H) x 118 (W) x 54 (D) below
weight approx.	1,8 kg

Material and pricing

Article no.	Material	RRP (excl. VAT)
KS1120E	AISI 304	299,00 €
KS1140E	AISI 316	369,00 €

Key safe 1420 E Code and 1440 E Code



Product features

- The smart 4 in 1 solution
- Robust 2mm stainless steel (AISI 304 or AISI 316)
- 2-point lock for secure storage
- Control via 4-digit user code and 8-digit master code
- Additionally: Remote code assignment – without any radio, WiFi or GSM connection
- No electricity connection required, battery-operated
- Suitable for use outdoors
- Each shelf has 3 key hooks (altogether 12 hooks)

Measurements and weights

external dimensions	348 (H) / 266 (W) / 87 (D) mm
internal dimensions each	103 (H) x 130 (W) x 54 (D) mm above, 67 (H) x 118 (W) x 54 (D) below
weight approx.	7,0 kg

Material and pricing

Article no.	Material	RRP (excl. VAT)
KS1420E	AISI 304	949,00 €
KS1440E	AISI 316	1.199,00 €

Key safe 2120 E Code and 2140 E Code



Product features

- Especially robust 3mm stainless steel (AISI 304 or AISI 316)
- 3-point lock and double-walled door for enhanced security
- Control via 4-digit user code and 8-digit master code
- Additionally: Remote code assignment – without any radio, WiFi or GSM connection
- No electricity connection required, battery-operated
- Suitable for use outdoors
- The safe has 3 key hooks

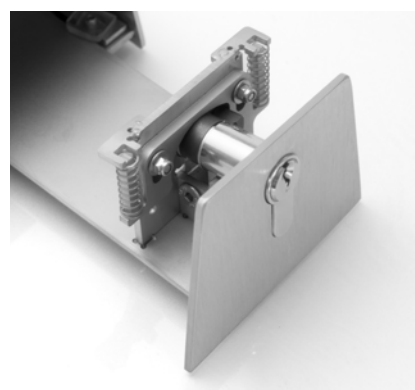
Measurements and weights

external dimensions	200 (H) / 139 (W) / 83 (D) mm
internal dimensions	162 (H) / 117 (W) / 38 (D) mm
weight approx.	4,0 kg

Material and pricing

Article no.	Material	RRP (excl. VAT)
KS2120E	AISI 304	399,00 €
KS2140E	AISI 316	469,00 €

Service safe XL 620 and 640



Product features

- Robust 3mm stainless steel (AISI 304 or AISI 316)
- A profile half cylinder (PHC) measuring 30 / 10 mm long is required (not included in the scope of supply)
- Product can be mounted with the help of a mounting plate. It will be mounted on the wall beforehand.
- Extra large space for storing keys with a length of up to 16 cm
- **Designed for outdoor use**

Measurements and weights

external dimensions	271 (H) / 103 (W) / 66 (D) mm
weight approx.	2 kg

Material and pricing

Article no.	Material	RRP (excl. VAT)
KD620	AISI 304	165,00 €
KD640	AISI 316	195,00 €

Key depot with combination lock 520 M Code and 540 M Code



Product features

- Robust 3mm stainless steel (AISI 304 or AISI 316)
- High-quality lock design with four-digit combination lock
- Automatic code blurring during every opening and closing operation (Opening the safe will automatically set back the code to 0000)
- Code identification and emergency opening by means of a service key
- Code can be modified without auxiliary means
- Constructed for use in the protected outdoor area

Measurements and weights

external dimensions	74 (H) / 129 (W) / 78 (D) mm
internal dimensions	55 (H) / 90 (W) / 40 (D) mm
weight approx.	1,2 kg

Material and pricing

Article no.	Material	RRP (excl. VAT)
KD520M	AISI 304	192,00 €
KD540M	AISI 316	229,00 €

Key depot with profile cylinder M3 25PC and M3 45PC



Product features

- Robust 3mm stainless steel (AISI 304 or AISI 316)
- A profile half cylinder (PHC) measuring 30 / 10 mm long is required (included in the scope of supply)
- Product can be mounted horizontally as well as vertically
- **Designed for outdoor use**

Measurements and weights

external dimensions	74 (H) / 129 (W) / 78 (D) mm
internal dimensions	55 (H) / 90 (W) / 30 (D) mm
weight approx.	1,2 kg

Material and pricing

Article no.	Material	RRP (excl. VAT)
KD325PZ	AISI 304	142,00 €
KD425PZ	AISI 316	167,00 €

Key depot – prepared for profile cylinder – M3 20 und M3 40



Product features

- Robust 3mm stainless steel (AISI 304 or AISI 316)
- A profile half cylinder (PHC) measuring 30 / 10 mm long is required (not included in the scope of supply)
- Product can be mounted horizontally as well as vertically
- **Designed for outdoor use**

Measurements and weights

external dimensions	74 (H) / 129 (W) / 78 (D) mm
internal dimensions	55 (H) / 90 (W) / 30 (D) mm
weight approx.	1,2 kg

Material and pricing

Article no.	Material	RRP (excl. VAT)
KD320	AISI 304	124,00 €
KD340	AISI 316	139,00 €

Key deposit box, VdS double-bit conversion lock, 328 and 348



Product features

- Seal ensures perfect door locking
- Robust 3 mm-thick stainless steel (AISI304 and AISI316)
- VdS-certified lock from dormakaba (formerly Mauer), type 70091
- Two keys included in the scope of supply
- **Designed for outdoor use**

Measurements and weights

external dimensions	149 (H) / 82 (W) / 78 (D) mm
internal dimensions	96 (H) / 64 (W) / 41 (D) mm
weight approx.	2 kg

Material and pricing

Article no.	Material	RRP (excl. VAT)
KD328	AISI 304	219,00 €
KD348	AISI 316	249,00 €

Surface-mounted safe, 221 and 241, standard – designed for PHC –



Product features

- Robust 3 mm-thick stainless steel (AISI304 and AISI316)
- A profile half cylinder (PHC) measuring 30 / 10 mm long is required (not included in the scope of supply)
- Horizontal or vertical installation possible
- Two key hooks
- **Designed for outdoor use**

Measurements and weights

external dimensions	110 (H) / 80 (W) / 55 (D) mm
internal dimensions	104 (H) / 74 (W) / 49 (D) mm
weight approx.	1 kg

Material and pricing

Article no.	Material	RRP (excl. VAT)
KD221	AISI 304	99,00 €
KD241	AISI 316	114,00 €

Surface-mounted safe, 222 and 242, credit card – designed for PHC –



Product features

- Robust 3 mm-thick stainless steel (AISI304 and AISI316)
- A profile half cylinder (PHC) measuring 30 / 10 mm long is required (not included in the scope of supply)
- Horizontal or vertical installation possible
- One key hook and space for one credit card
- **Designed for outdoor use**

Measurements and weights

external dimensions	110 (H) / 80 (W) / 55 (D) mm
internal dimensions	104 (H) / 74 (W) / 49 (D) mm
weight approx.	1 kg

Material and pricing

Article no.	Material	RRP (excl. VAT)
KD222	AISI 304	109,00 €
KD242	AISI 316	124,00 €

Surface-mounted safe, 223 and 243, XL – designed for PHC –



Product features

- Robust 3 mm-thick stainless steel (AISI304 and AISI316)
- A profile half cylinder (PHC) measuring 30 / 10 mm long is required (not included in the scope of supply)
- Horizontal or vertical installation possible
- **Designed for outdoor use**

Measurements and weights

external dimensions	203 (H) / 111 (W) / 55 (D) mm
internal dimensions	197 (H) / 105 (W) / 49 (D) mm
weight approx.	1,75 kg

Material and pricing

Article no.	Material	RRP (excl. VAT)
KD223	AISI 304	119,00 €
KD243	AISI 316	134,00 €



Resatur GmbH

Head office:

Klopstockstraße 5
22765 Hamburg
GERMANY
+49 (0) 40 / 716 629 901
+49 (0) 40 / 716 629 902
info@masunt.com
www.masunt.com

Managing directors:

Markus Schacht
Stephan Untiedt