



Technical Surveillance Counter Measures

- Non-linear junction detectors
- Data Leakage Channels Detection
- Counter Espionage Devices



www.selcomsecurity.com

Content

Technical Surveillance Counter Measures

Non-linear junction detectors

Non-linear junction detector	EDD-24T	3
Non-linear junction detector	DT-830	4
Non-linear junction detector	DT-820	5
Non-linear junction detector	DT-820 PLUS	6
Non-linear junction detector	DT-810	7
Non-linear junction detector	FJT-C-S6	8
Non-linear junction detector	HW-24	9

Data Leakage Channels Detection

Handheld RF Spectrum Analyser	HSA-QI	10
Wireless Activity Monitor	WAM-X25	11
Multiband Wireless Activity Monitor	WAM-I08T	12
Cellular Activity Monitor (2G/3G/4G/5G, 2.4&5GHz WiFi/BT)	CAM-GX5	13
Wideband Digital Pocket RF Detector	PRO-WI2DX	14
Pocket Bug Detector	PRO-SL8	15
WiFi Eavesdropping Device Detection and Jamming System	BLS WI-FI SCREEN PRO	16
Signal Acquisition Identification and Location TSCM Signal Analyzer	S.A.I.L.	17
Ultra-fast Scanning Spectrum Analyser	MERLIN MK4	18
Acoustically Stimulated Microphone Detector	BLOODHOUND	19
Automatic Counter-surveillance RF Sweeping System (6GHz/ 18GHz)	THE STEALTH TEAM	20
Smartphone, Cell phone Detector with Real Time Monitoring Capability	THE STEALTH PRISON	21
Bug Detector with Real Time Remote Monitoring Capability	THE STEALTH 24/7	22
Optical camera detector	OPTIC-2	23

Counter Espionage Devices

Acoustic Safe Standard Model	PROSAFE STANDARD	24
Acoustic Safe Portable Model	PROSAFE PORTABLE	25
Protection box	SI, S2, S6	26
Advanced Digital Noise Generator	THE STEALTH DNG-2300	27
3CH White Noise Generator Generator	THE STEALTH LA5000	28
Portable Speech Protection System	THE STEALTH DRUID D-06	29
Jammer of microphones and Audio recorders	SEL ULTRA MAX	30
Jammer of microphones and Audio recorders	SEL ULTRA	31
Jammer of microphones and Audio recorders	SEL OMNI TOWER	32
Jammer of microphones and Audio recorders	SEL OMNI TOWER MINI	33
Jammer of microphones and Audio recorders	SEL PANEL ULTRA MAX	34
Jammer of microphones and Audio recorders	SEL O8	35
Jammer of microphones and Audio recorders	SEL INFRATORNADO®	36
Jammer of microphones and Audio recorders	ZERO	37
Jammer of microphones and Audio recorders	S20MJ20	38
Multifunctional noise generator	MNG-06	39



Selcom Security was founded in 2007 as an integrator of wide range of TSCM, countersurveillance and anti-terrorism devices. Close relationship with manufacturers lets us provide flexible solutions to problems of any complexity at competitive price.

Our advantages:

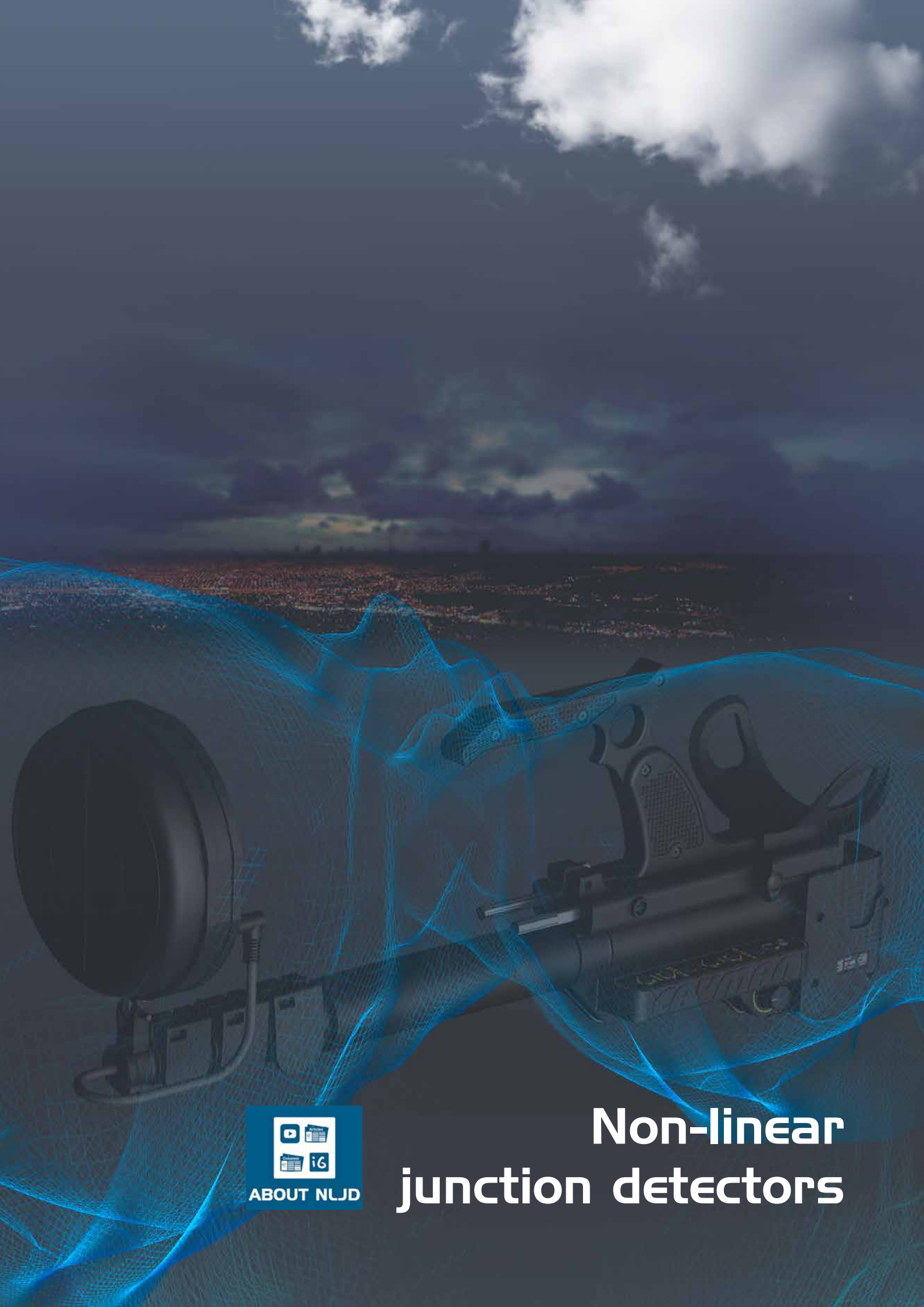
- Our store is located in European Union region allowing us to supply devices in shortest time without need of customs procedures;
- NATO Commercial And Government Entity (NCAGE) code **010KR** allow us to work more effectively;
- We offer training programs for groups and individuals;
- Feedback relationships with customers let us provide technical support and consultations regarding any question related to use of equipment;
- Warranty, post warranty and repair service of wide spectrum of the devices ensure solution of customers problems in shortest terms.

Information about the following devices are provided in this catalogue:

- Non-linear junction detectors (EDD-24T, DT-830, DT-820, DT-820 Plus, DT-810, FJT-C-56, HW-24, CAM-GX5);
- RF detectors (HSA-Q1, WAM-X25, PRO-W12DX, WAM-108t, PRO-SL8, CAM-GX5, MERLIN-MK4, S.A.I.L., BLS Wi-Fi Screen Pro, The Stealth PRISON, TEAM, 24/S);
- Camera detectors (Optic-2);
- Equipment for protection of confidential conversations (PROSAFE, S1, S2, S6, SEL ULTRA, SEL ULTRA MAX, SEL SOMNI TOWER, SEL OMNI TOWER MINI, SEL PANEL ULTRA, SEL 08, 20MJ20, ZERO, INFRATORNADO, The Stealth DNG-2300, The Stealth LA5000, The Stealth DRUID D-06);

Full range of our products can be found on our web site www.selcomsecurity.com

We are open to business cooperation with companies from any part of the world!



Non-linear junction detectors

■ Non-linear junction detector

EDD-24T

The EDD-24T is a compact handheld Non Linear Junction Detector or NLJD. It will detect the presence of semiconductor circuits that are used in all modern electronic devices such as mobile phones, tracking devices, listening devices, covert cameras, digital voice recorders, SIM cards etc. Importantly, the EDD-24T will detect such devices whether they are switched on and in use, powered on but in standby mode, or even switched off without any power.

Application

- Search for active and passive electronic eavesdropping devices;
- Detection of SIM Cards, Mobile Phones, Bugging Devices, Voice Recorders, Covert Video cameras etc;
- Search for other electronic devices comprising semiconductor elements;
- Checking parcels and mail for dangerous attachments containing semiconductors.

Features

- High detection sensitivity at a low output power;
- "Silicon" or "Metal" probability Indicator;
- Additional opportunities to identify the response provided by the analysis of signals in the "DEMODO" mode;
- Ergonomic design and low weight of 750g provides maximum comfort for the operator;
- Machined aluminium enclosure;
- 4.5 hours of operation from one charge;
- Military grade carry case.

Specifications

Transmit Frequency	2.400 GHZ to 2.425 GHZ (ISM Band Type B)
Transmit Power Level	Up to +30dBm (1 Watt)
Radiated Power Antenna	Up to +36dBm (4 Watts) within allowable limits of ISM band (Type B)
Display	3.5 inch Colour TFT Daylight Readable
Receiver Sensitivity	40dB (5 values with 8dB increment)
Receiver Bandwidth	visual (Light), sound
Battery	3.7V Lithium Polymer Internal rechargeable
Battery life	4.5 Hours (Minimum TX Power) 2.0 Hours (Maximum TX Power)
DC Charge	Micro USB Socket 5V 1A
Charger	Input 110/220V Auto-switching - International Adaptors
Output	5V DC 2A
Audio	Internal Loudspeaker or via 3.5mm Earphone Socket
Operating Temperature	0 to +40 degrees C
Enclosure	Machined Aluminium Enclosure with Plastic Antenna Cover
Weight	Main Unit 700g with Carry Case 2.0kg
Dimensions,mm	225x118x51
Carry Case	Military Standard 321mm x 229mm x 111mm



■ Non-linear junction detector

DT-830

DT-830 is a new type of thermal imaging non-linear junction detector, which integrates the functions of thermal imaging and NLJD. It can detect electronic devices hidden in walls, floors, ceilings, lamps, furniture or containers, as well as evaluate the appearance of it, what improves the efficiency of the operation.



Application

- Business Safety: Detecting unauthorized electronic devices, such as eavesdroppers, mobile phones and devices with SIM cards, hidden in company board rooms or secret offices.
- Public Safety: Detecting electronic devices hidden or prohibited from use in safe areas, such as detonators, remote controllers, etc.
- Personal Privacy Protection: Detecting Hidden cameras and surveillance devices such as recording pens, cameras, etc. in residential buildings and hotels.

Competitive advantages

- Thermal imaging function;
- Strong Semiconductor Recognition Ability;
- Low probability of false alarms;
- Simple and intuitive interface
- High sensitivity;
- Low weight 1,56kg;
- Long operation time 4h;

Specifications

Nonlinear Junction Parameters	
Transmitting Frequency range	2.404 GHz - 2.472 GHz
Receiving 2nd Harmonic	4.808 GHz - 4.944 GHz
Receiving 3d Harmonic	7.212 GHz - 7.416 GHz
Voltage	7.4V
Pulse Mode Transmit Power (Max.)	0-4W (EIRP)
Receiving sensitivity	-140dBm
Receiving dynamic adjustable range	30dB
Operation Time in Max Power Pulse Mode	4h
Thermal Imaging Parameters	
Array format	160x120, continuous scanning
Pixel size	12 μm
Thermal imaging sensitivity	<50mK (0.050 C)
FOV-horizontal	57°
FOV-diagonal	71°
Lens type	F/1.1
Other Parameters	
Battery type	Replaceable lithium battery
Charging time	Fast charging 2.5 hours/block
Interactive interface	Audio, LCD Displays, Vibration Tips, Imaging of Objects
Detection distance	GPS module: 40-50cm, Mobile phone: 18-22cm
Product size	750(L)*114(W)*108mm(H)
Outer box size	700(L)*330(W)*180 mm(H)
Product weight	1.56kg
Working temperature	-30...+55°C
Working humidity	No more than 93%, no condensate

www.selcomsecurity.com



■ Non-linear junction detector

DT-820

DT-820 is a compact NLJD, which can detect electronic devices hidden in walls, floors, ceilings, lamps, furniture or containers, switched on or off, by display, sound and vibration.



Application

- It can be widely used in government, public security, prison, justice, army, education examination, business security and personal privacy protection, etc.
- Business Safety: Detecting unauthorized electronic devices, such as eavesdroppers, mobile phones and devices with SIM cards, hidden in company board rooms or secret offices.
- Public Safety: Detecting electronic devices hidden or prohibited from use in safe areas, such as detonators, remote controllers, etc.
- Personal Privacy Protection: Hidden cameras and surveillance devices such as recording pens, cameras, etc. in residential buildings and hotels.

Competitive advantages

- Compact size;
- Automatic and manual power output control;
- Low probability of false alarms;
- Simple and intuitive OLED visual graphical interface
- High sensitivity;
- Very low weight 0,52kg;
- Long operation time 4h;

Specifications

Transmitting Frequency range	2.404GHz - 2.472GHz
Receiving 2nd Harmonic	4.808GHz - 4.944GHz
Receiving 3d Harmonic	7.212GHz - 7.416GHz
Voltage	7.4V
Pulse Mode Transmit Power (Max.)	0-1 W (EIRP)
Receiving sensitivity	-125dBm
Receiving dynamic adjustable range	50dB
Operation Time in Max Power Pulse Mode	4,5 h
Battery Type	Replaceable Lithium Battery
Charging Time	Fast Charging 3h
Interactive Interface	Audio, LED Displays, Vibration Tips,
Detection Distance	GPS Module: 40-50cm Mobile Phone: 15-22cm Sim Card: 8-9,5cm
Product Size	370(L)*96(W)*38mm(H)
Outer Box Size	355(L)*295(W)*165 mm(H)
Product Weight	0.52kg
Working Temperature	-20...+ 55°C
Working Humidity	No more than 93%, no condensate



■ Non-linear junction detector DT-820 PLUS

DT-820 Plus is an upgraded model of DT-820, adopting higher-level chip, compact NLJD, which can detect electronic devices hidden in walls, floors, ceilings, lamps, furniture or containers, switched on or off, by display, sound and vibration.



Application

- It can be widely used in government, public security, prison, justice, army, education examination, business security and personal privacy protection, etc.
- Business Safety: Detecting unauthorized electronic devices, such as eavesdroppers, mobile phones and devices with SIM cards, hidden in company board rooms or secret offices.
- Public Safety: Detecting electronic devices hidden or prohibited from use in safe areas, such as detonators, remote controllers, etc.
- Personal Privacy Protection: Hidden cameras and surveillance devices such as recording pens, cameras, etc. in residential buildings and hotels.

Competitive advantages

- Compact size;
- Extension rod;
- Automatic and manual power output control;
- Low probability of false alarms;
- Simple and intuitive OLED visual graphical interface
- High sensitivity;
- Very low weight 0,52kg;
- Long operation time 4,5h;

Specifications

Transmitting Frequency range	2.404GHz - 2.472GHz
Receiving 2nd Harmonic	4.808GHz - 4.944GHz
Receiving 3d Harmonic	7.212GHz - 7.416GHz
Pulse Mode Transmit Power (Max.)	0-1W (EIRP)
Receiving sensitivity	-125dBm
Receiving dynamic adjustable range	50dB
Operation Time in Max Power Pulse Mode	up to 4,5 h
Battery Type	Replaceable Lithium Battery
Charging Time	Fast Charging 3h
Interactive Interface	Audio, LED Displays, Vibration Tips, GPS Module: 40-50cm
Detection Distance	Mobile Phone: 15-22cm Sim Card: 8-9,5cm
Extension rod	80-136cm
Product Size	365(L)*110(W)*65mm(H)
Outer Box Size	580(L)*300(W)*150 mm(H)
Product Weight	0.52kg
Working Temperature	-20...+ 55°C
Working Humidity	No more than 93%, no condensate



■ Non-linear junction detector DT-810

DT-810 is a non-linear junction detector developed with modern advanced technology. It can detect any electronic equipment hidden in walls, floors, ceilings, lamps, furniture or containers. Whether these electronic devices are transmitting signals or not, alerted by display, vibration and sound indicators.

Application



- It can be widely used in government, public security, prison, justice, army, education examination, business security and personal privacy protection, etc.
- Business Safety: Detecting unauthorized electronic devices, such as eavesdroppers, mobile phones and devices with SIM cards, hidden in company board rooms or secret offices.
- Public Safety: Detecting electronic devices hidden or prohibited from use in safe areas, such as detonators, remote controllers, etc.
- Personal Privacy Protection: Hidden cameras and surveillance devices such as recording pens, cameras, etc. in residential buildings and hotels.

Competitive advantages

- Extention rod;
- Automatic and manual power output control;
- Low probability of false alarms;
- Simple and intuitive OLED visual graphical interface
- High sensitivity and accuracy;
- Low weight 1,6kg;
- Long operation time 5h;

Specifications

Transmitting Frequency range	2.404 GHz - 2.472 GHz
Receiving 2nd Harmonic	4.808 GHz-4.944 GHz
Receiving 3d Harmonic	7.212 GHz-7.416 GHz
Voltage	8.4V
Pulse Mode Transmit Power (Max.)	0-4W (ERIP)
Receiving sensitivity	-140dBm
Receiving dynamic adjustable range	30dB
Operation Time in Max Power Pulse Mode	4h
Battery type	Replaceable lithium battery 4 AH
Charging time	Fast charging 2.5 hours/block
Interactive interface	Audio, LCD Displays, Vibration Tips.
Detection distance	GPS module: 40-50cm, Mobile phone: 18-22cm Sim Card: 9-12cm
Product size	750(L)*114(W)*108mm(H)
Case size	700(L)*330(W)*180mm(H)
Product weight	1.52kg
Working temperature	-30...+55°C
Working humidity	No more than 93%, no condensate



■ Non-linear junction detector FJT-C-S6

FJT-C-S6 NLJD is used for search and location of electronic devices both in active and switch-off state. The detector operation is based on the property of semiconductor components which generates a harmonics response when radiated by a microwave probing signal.

Device can automatically find the best receiving frequency channel free from interference, so it can be used in a complex electromagnetic environment. The device has automatic power adjustment option.

Device can simultaneously detect semiconductors and metals, such as remote control, mobile phones, cameras, listening devices, transmitters and so on. At maximum power and sensitivity mode, the range of analog electronics detection is not less than 50cm. Max. distance for metal detector is (5 g metal) 30cm.

Competitive advantages

- Extension rod;
- Metal detection;
- Low probability of false alarms;
- LCD touch screen;
- High sensitivity;
- Low weight 1,6kg;
- Light source;

Specifications

Frequency range	2400.5MHz -- 2485.5MHz
Signal form	Pulse duty cycle of 5%
Pulse width	500us
Transmitter power	3.7W (peak)
Transmitting antenna gain	7Db
Transmitting antenna VSRW	<1.5
2 nd harmonic receiver frequency	4801MHz -- 4971MHz
2 nd harmonic receiver sensitivity	-140dBm
2 nd harmonic receiver antenna gain	7Db
2 nd harmonic receiver antenna VSRW	<1.5
3 ^d harmonic receiver frequency	7201.5MHz -- 7456.5MHz
3 ^d harmonic receiver sensitivity	-140dBm
3 ^d harmonic receiver antenna gain	7Db
3 ^d harmonic receiver antenna VSRW	<1.5
Power consumption	not more than 10W
Display	LCD touch + rear-projection light source
Operating time	3 hours
Charge time	2 hours
Weight	~1.7kg
Weight when packed	~5.2kg
Limit temperature range	-20...+60°
Relative humidity at +25°	not more than 80%.
Size	680x130x118mm
Extended size	1400x130x118mm



■ Non-linear junction detector HW-24

HW-24 is an unique non-linear junction detector that is notable for its compact size, ergonomic design and weight. It is highly competitive with most popular models of non-linear junction detectors. It can operate in continuous and pulse mode as well, having a variable power output.

Automatic frequency selection allows operation in complex electromagnetic environment. Operation at higher frequencies makes it in some cases more efficient than detectors with standard frequencies but with greater power output.



Competitive advantages

- Small size;
- High sensitivity and accuracy;
- Very low weight 1kg;
- Operation time up to 3h;

Specifications

Signal frequency	2400 - 2483 MHz
Max. peak power of radiation in pulse mode	10W
Maximum continuous radiation power(CW)	300mW
The adjustment range of signal power	20dBm
2nd Harmonic frequency	4812 - 4828 MHz
3rd Harmonic frequency	7218 - 7242 MHz
Receiver Sensitivity	-108 dBm
Dynamic range	80 dBm
Power supply	Built-in Rechargeable Li-battery, 3.7v, 7.8Ah
Battery life	3 hours at max power in a pulsed mode 1 hour at max power in a continuous mode
Device dimension in operation	L47cm x W12.5cm x H6cm
Device dimension (folded)	L28cm x W12.5cm x H6cm
Device weight	1kg
Alarm mode	Audible and Visual (LED indicator)
Operating temperature	+5° ...+40°





**Data leakage
channels detection**

■ Handheld RF Spectrum Analyser

HSA-Q1

The HSA-Q1 is a fully integrated portable RF Spectrum Analyser designed specifically for professional countermeasures use. With a frequency range of 0 to 13.4 GHz and sweep time of just half a second, it offers unprecedented performance in a truly handheld package.

Features:

- Frequency Range 1 MHz to 13.44 GHz
- Sweep time of just 0.5 seconds (Full Range)
- Spectrogram Waterfall Function for detected signal analysis
- Tune & Listen demodulation function - AM/WFM/NFM
- Data Logging to USB Stick with Time & Date stamp
- Background Memory Function to compare previous sweeps
- Very High RF Sensitivity (-80 dBm Sweep, -100 dBm Direct Tune)
- 6" TFT Display Screen - Outdoor Readable
- Audio through internal Speaker or Earphones
- Multi-element custom antenna supplied
- Internal Lithium Polymer Battery - 4 Hours Battery Life
- Weight just 1.3kg
- Machined Aluminium Enclosure
- Supplied in Compact Military Standard Carry Case

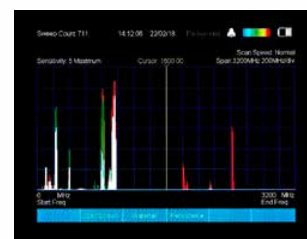


HSA-Q1 has been designed with the highest possible technical specification to ensure maximum detection capability and has a range of invaluable features to aid countermeasures RF detection or 'Sweeps'. Despite its technical capability the HSA-Q1 remains easy to operate with an intuitive user friendly interface.

HSA-Q1 features a wide 1 MHz to 13.44GHz frequency range with a sweep time of just 0.5 seconds (faster in shorter spans) to ensure detection of all types of RF signals especially modern pulsed burst signals that can be missed by slower sweeping units.

Specifications at +20° C

Detected Frequency Range	2400 - 2483 MHz
Sweep time	10W
Waterfall Function	Real Time Colour Spectrogram
Tune & Listen Function	Direct Tune to any frequency (1 KHz Resolution) AM/WFM/NFM Demodulation via Speaker or Earphones
Background Memory Function	Record RF environment and store for later comparison
RF Sensitivity in Sweep Mode	-80 dBm Max
RF Sensitivity in Tune & Listen Mode	-100 dBm Max
Display	6" TFT Display Screen - Outdoor Readable
Data Logging interface	to USB Stick - Time and Date Stamped
Audio Output	Internal Speaker or Headphone Socket
RF Connector	TNC Jack
Antenna 1	Multi-Element 13.44GHz - Length 220mm x Dia. 17mm
Antenna 2	Telescopic Whip Antenna (Low Frequency use)
Power	Internal Lithium Polymer Battery - up to 4 Hours Battery Life
DC Charge	Micro USB
Charger	110/220V Auto-switching with International Adaptors
Enclosure	Machined Aluminium Enclosure
Weight:	1.3Kg (Main unit)
Dimensions	Height 223mm x Width 158 mm x Depth 45mm
Carry Case	Compact Military Standard -L363mm x W282mm x H120mm



■ Wireless Activity Monitor

WAM-X25

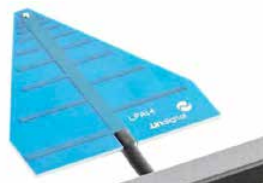
The WAM-X25 Wireless Activity Monitor is a compact tablet-style, multi-band Radio Frequency (RF) signal detector for handheld or desktop use. It is designed for detection and logging of transmissions from all types of radio frequency devices. The WAM-X25 provides complete coverage and logging of all RF activity in the surrounding area. Designed for the TSCM Professional.



Data Leakage Channels Detection

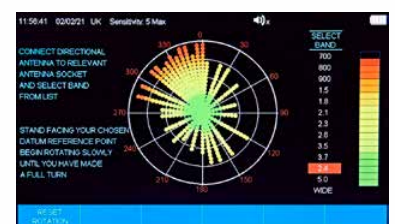
Features:

- Detects 2G/3G/4G and the latest 5G devices - plus Wi-Fi/Bluetooth/2.4GHz & 5GHz Devices
- Detects Mobile Phones, Smartphones, GPS Trackers, SMS (Texts), GSM Bugs, 3G/4G/5G Video, Bluetooth & Wi-Fi Devices, Store & Forward devices
- Worldwide Cellular Coverage - Simply select the relevant region of use
- Separate Wideband RF Detector 0-14 GHz with Audio Demodulation
- Separate 2.4GHz & 5GHz Wi-Fi Detector
- Wi-Fi Network Analyser provides data on nearby WLAN networks
- Bluetooth Device Analyser provides data on nearby Bluetooth devices.
- Direction Find Function for pin-pointing signal sources
- Event Log records Time/Date, Band, Duration & Signal Strength of up to 10,000 Events
- Log can be viewed on screen or saved to USB stick for storage/viewing on a computer
- Graph Mode plots real time or historical graph of all detected cellular bands
- Widescreen High Resolution 7-inch Colour TFT Display
- Adjustable Omnidirectional & Directional Antennas
- Machined aluminium enclosure for maximum durability.



Specifications at +20° C

Wideband Frequency Range	10-14000MHz (14 Ghz)
Cellular Regions covered	UK, EUROPE, ASIA, AFRICA, N. AMERICA, S. AMERICA, AUSTRALIA
Cellular Frequency Range	International bands - (300 MHz to 6 GHz) Maximum 10 viewable bands - Sensitivity -70 dBm Max
2.4 and 5 GHz Frequency Range	2400...2485 MHz and 5150...5850 MHz
Wi-Fi Analyser	802.11a/b/g/n: 2.4 GHz and 5 GHz
Display	TFT Colour 7.0 High Contrast Graphic Display
Battery	Internal Lithium-Polymer rechargeable. Operating duration with fully charged battery is up to 8 hours
Charging	Micro USB socket Charge Time 4 hours
Operating Temperature Range	15 to +50° C, Relative Humidity 90%
Dimensions	230x150x28 mm
Weight	Main Unit 1.0 kg, Carry Case Complete 2.7 Kg
Signal Processing and Control	RISC Based Microcontroller with real time clock
Event Log	Maximum 10000 Events
USB Socket	For USB Stick download only



■ Multiband Wireless Activity Monitor

WAM-108T

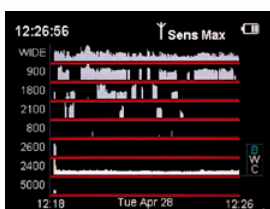
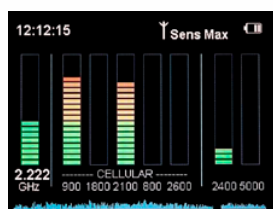
The WAM-108t Multiband Wireless Activity Monitor is a high specification handheld multiband detector for the detection and logging of all types of radio frequency devices. Designed for the ever increasing threat from more sophisticated and higher frequency RF devices, the WAM-108t provides complete coverage and logging of all activity in the surrounding area.



The WAM-108t is designed to detect and locate transmissions from all types of Radio Frequency devices. It contains an unprecedented eight separate RF detectors operating simultaneously to give complete RF coverage: 1 x 0-14 GHz Wideband, 5 x Cellular 2G/3G/4G and 2 x Wifi/Bluetooth 2.4 GHz and 5 GHz.

Advantages:

- Multiband Wireless Detection and logging of all types of RF signals
- 8 Separate RF detectors operating simultaneously to give complete RF coverage:
- 1 x 0-14 GHz Wideband Detector, 5 x Cellular 2G/3G/4G Detectors and 2 x Wifi/Bluetooth 2.4 GHz & 5 GHz Detectors
- Detects all types of RF devices: Audio and Video Bugs, Mobile Phones, Smartphones, GPS Trackers, SMS (Texts), GSM Bugs, 3G/4G Video, Bluetooth & Wifi Devices, Burst and 'Store & Forward' devices
- Wideband detection range of 0-14 GHz - our highest ever detection coverage with 6 GHz frequency counter for analogue and digital signals
- Cellular bands detect 800 MHz (4G), 900 MHz (2G/4G), 1800 MHz (2G/4G), 2100 MHz (3G), 2600MHz (4G)
- Separate 2.4 GHz and new 5Ghz band detector for Wifi/Bluetooth/Video and other latest generation devices



Event	Date	Time	Frequency	Sig	Dur.
265	27/04/15	20:05:45	Wideband	2	00:02
266	27/04/15	20:06:00	399.7 MHz	12	00:08
267	27/04/15	20:06:12	439.9 MHz	13	00:09
268	27/04/15	20:06:12	800	10	00:09
269	27/04/15	20:06:44	2.437 GHz	15	00:44
270	27/04/15	20:25:53	5.749 GHz	20	00:08
271	27/04/15	20:25:57	Wi-Fi	0	--:--
272	27/04/15	20:26:50	1800	11	00:55

Specifications at +20° C

2G 900MHz	Band Width: 880 - 915MHz
2G/4G 1800MHz	Band Width: 1710 - 1785MHz
3G (UMTS) (WCDMA) 2100 MHz	Band Width: 1925 - 1975MHz
4G 800MHz	Band Width: 824 - 849 MHz
4G 2600MHz	Band Width: 2500 - 2570 MHz
2400MHz WIFI/BLUETOOTH etc.	Band Width: 2400 - 2485 MHz
5000MHz WIFI/WLAN etc.	Band Width: 4900 to 5950MHz
Display	TFT Colour 3.5' High Contrast Graphic Display
Battery	Internal Li-Ion rechargeable Operating 8 hours, Charge Time - 4 hours
Operating Temperature Range	15...+50o C - Relative Humidity < 90%
Dimensions	186x195x34 mm (max)
Weight	600g main unit
Signal Processing and Control	RISC Based Microcontroller with real time clock
Event Log	Maximum 4000 Events
USB Socket	For USB Stick download only



Data Leakage Channels Detection



■ CELLULAR ACTIVITY MONITOR

CAM-GX5

The CAM-GX5 Cellular Activity Monitor is a handheld multi-band cellular signal detector ready for the latest generation of 5G devices (as well as existing 2G, 3G & 4G), plus the latest WiFi/Bluetooth devices for detection of detect and locate transmissions from cellular mobile phone-based devices including mobile phones, smartphones, vehicle trackers, Wi-Fi Hotspots, GSM listening devices (bugs) and covert wireless 3G/4G/5G cameras.

It offers unprecedented levels of detection in a handheld unit and logs all cellular activity within range. Simply select the International region the device is being used in and the CAM-GX5 will detect signals from all the relevant cellular bands. This means the CAM-GX5 is ready for the rollout of the latest 5G devices, worldwide. Of course, all existing 2G, 3G and 4G bands will also be covered.

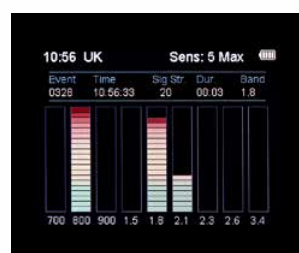
A new powerful high-gain RF front end ensures detection up to 50 meters depending on signal strength and ambient conditions. The CAM-GX5 is supplied with a new adjustable hinged antenna design for optimum performance and flexibility.

Features:

- Detects 2G/3G/4G and the latest 5G devices - plus WiFi/Bluetooth/2.4GHz and 5GHz Devices
- Detects Mobile Phones, Smartphones, GPS Trackers, SMS (Texts), GSM Bugs, 3G/4G/5G Video, Bluetooth & WiFi Devices, Store & Forward devices
- Worldwide Cellular Coverage - Simply select the relevant region
- Separate 2.4GHz & 5GHz band detector for WiFi/Bluetooth/Video and other latest generation devices
- Increased Sensitivity across all bands - Detects signals from up to 50 metres
- Cellular Event Log records Time/Date, Band, Duration & Signal Strength of up to 4000 Events
- Log can be viewed on screen and downloaded to USB stick for storage/viewing on a computer
- Graph Mode plots real time or historical graph of all detected cellular bands
- 3.5-inch Colour TFT Display with easy to use menu driven operation
- Adjustable hinged antenna
- Audible Signal Strength 'Beep' and Silent Vibrate Mode
- Machined Aluminium Enclosure for maximum durability
- Internal Lithium Polymer battery pack - Charger supplied
- Supplied in Heavy Duty Military Standard Carry case

Specifications at +20° C

Regions covered	UK, EUROPE, ASIA, AFRICA, N. AMERICA, S. AMERICA, AUSTRALIA
Detection Frequency Range	International bands - (300 MHz to 6 GHz) - Maximum 10 displayable bands
Sensitivity	-70 dBm Max
Display	TFT Colour 3.5" High Contrast Graphic Display
Battery	Internal Lithium-Polymer rechargeable Operating duration - fully charged battery - up to 6 hours
Charging	Micro USB socket - Charge Time ~ 4 hours
Operating Temperature Range	-15...+50o C - Relative Humidity < 90%
Dimensions	173x103x25 mm
Weight	Main Unit - 400g, Carry Case Complete - 1.6 Kg
Signal Processing and Control	RISC Based Microcontroller with real time clock
Event Log	Maximum 4000 Events - Cellular Log Maximum 24 Hours - 2.4/5GHz/Wi-Fi/Bluetooth Log
USB Socket	For USB Stick download only



■ Wideband Digital Pocket RF Detector

PRO-W12DX

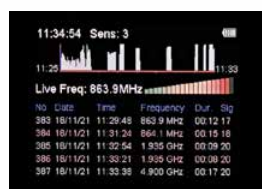
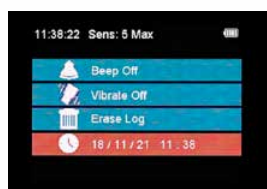
The PRO-W12DX handheld wideband RF Detector is designed to detect and locate signals from the very latest covert listening, tracking, cellular and video devices. With a completely new hardware design the PRO-W12DX packs new features that have never been seen before in a pocket handheld RF detector.



It features a 0-12 GHz RF frequency range with unrivalled sensitivity particularly at higher frequencies for the growing threat from the latest super high-frequency devices. A new intelligent frequency-counter design has been implemented that can now display most digital frequencies as well as analogue signals up to an unprecedented 6 GHz.

Features:

- Ultra wide frequency response - Now up to 12 GHz with improved top end performance
- Frequency Counter 0-6 GHz for analogue and digital signals
- 'Livescan' feature shows live detected signal trace
- 1000 Event Memory Log with Time & Date records all detected Burst signals & frequencies
- Live Graph Mode plots detected signals / frequencies over time
- 2.5 inch Colour TFT display
- Ultra-sensitive - even at very high frequencies
- Two antennas - High Gain Directional antenna and Hinged Omnidirectional antenna
- Signal Strength 'Beep' and Silent Vibrate Mode
- Machined Aluminium Enclosure for maximum durability
- Supplied in Heavy Duty Military Standard carry case



Specifications at +20° C

Antenna Connector	SMA Socket - 50 Ohm
Input Frequency Range	1MHz - 12,000 MHz (12.0 GHz)
Sensitivity	100 MHz -49 dBm
	200 MHz -48 dBm
	500 MHz -47 dBm
	1 GHz -44 dBm
	2 GHz -50 dBm
	5 GHz -42 dBm
	10 GHz -30 dBm
Demodulation Sens. for 50mW Audio	12 GHz -28 dBm
	-30dBm (measured at 500MHz 50% AM 1kHz)
Audio Frequency Response	400Hz - 5kHz +/-2dB
Display	TFT Colour 2.5" High Contrast Graphic Display
Battery	Internal 3.7V 1500 mAH Li-Ion rechargeable
	Operating Duration - fully charged battery 8 hours Charge Time - 4 hours
Operating Temperature Range	-15...+50° C - Relative Humidity < 90%
Dimensions	146x80x24 mm
Weight	Main Unit - 250g. Complete in Carry Case - 1.3kg
Signal Processing and Control	RISC Based Microcontroller
Memory	1000 Event Log - Time & Date - non-volatile memory
	8-minute live graph of signal data and frequency



■ Pocket Bug Detector 0-8 GHz

PRO-SL8

The PRO-SL8 is an ultra compact pocket sized Bug Detector with a unrivaled performance for its size and features 0 to 8 GHz frequency detection range with ultra high sensitivity, but couldn't be simpler to operate. Simply switch on and any detected will be shown on the built in OLED display.

It is designed to detect and locate signals from the very latest covert listening, tracking, cellular, and video devices. With a completely new hardware design the PRO-SL8 has unrivalled sensitivity for its size and can display detected frequencies up to 6 GHz.

The PRO-SL8 also features audio demodulation to allow the user to listen to any detected signals using the supplied earphones. For ultimate durability the PRO-SL8 is housed in a machined aircraft grade aluminium enclosure

A 20 segment display indicates signal strength along with an audio tone, enabling you to pin point the signal source precisely. If you wish to check for devices without alerting others the PRO-SL8 can be set to silent vibrate mode. If any signals are detected the unit will pulse vibrate silently, allowing you to keep it concealed on your person, in a jacket pocket, for example.

The built in signal strength meter (with optional audio beep tone) enables the precise source of the signal to be located with ease. The frequency of the detected signal can be seen simultaneously and the Burst Detect feature ensures short bursts such as those from GPS trackers or other burst devices will not be unnoticed.

Features:

- Ultra Wide Frequency response 0 - 8 GHz
- Built in Frequency Counter 0 - 6 GHz
- Ultra Sensitive - Detects signals from up to 10 metres
- Digital 'Burst' Signal Detect for GPS Trackers etc
- OLED Display for ultimate clarity in all lighting conditions
- Audio Demodulation - Listen to detected signals
- Silent Vibrate & Beep Modes for Signal Strength
- Machined Aluminium enclosure for ultimate durability

Specifications at +20° C

Antenna Connector	MCX Socket - 50 Ohm
Input Frequency Range	1MHz - 8000MHz (8 GHz)
Sensitivity	200MHz -42 dBm
	500MHz -42 dBm
	1GHz -44 dBm
	2GHz -46 dBm
	5GHz -42 dBm
	8Ghz -40 dBm
Frequency Counter	100 Mhz to 6000MHz (6 GHz)
Demodulation Sens. for 50mW Audio	-30dBm (measured at 500MHz 50% AM 1kHz)
Audio Frequency Response	400Hz - 5kHz +/-2dB
Display	OLED High Contrast Graphic Display
Battery	Internal 3.7V Li-Ion rechargeable
	Operating Duration -6 hours
	Charge Time - up to 4 hours
Operating Temperature Range	-15... +50° C - Relative Humidity < 90%
Dimensions	126x65x25 mm
Weight	200 g - Main Unit
Signal Processing and Control	RISC Based Microcontroller



WiFi Eavesdropping Device Detection and Jamming System

BLS WI-FI SCREEN PRO

BLS Wi-Fi Screen Pro is a system that in data collection and analysis mode does not emit radio signals in any frequency ranges other than electromagnetic emissions of the computer. In **signal jamming mode (option)** works as an intelligent jammer on all Wi-Fi and BT frequencies and channels.



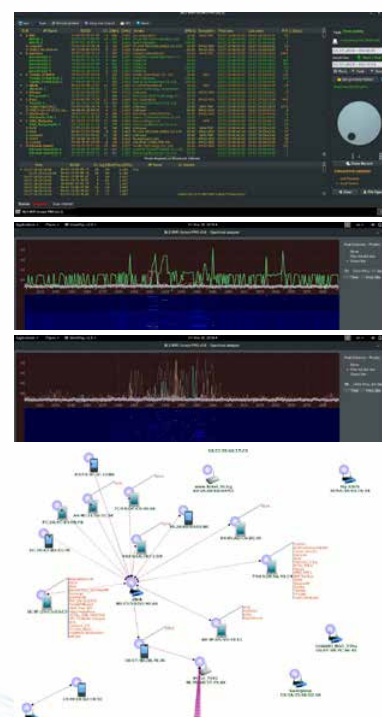
The system is designed for National Security Services, TSCM services, private and state VIP security guards, Corporate Security Services, Wi-Fi installation companies. Device designed to localize Wi-Fi modules, prevent WiFi networks and devices from attacks, detect spyware eavesdropping, tracking devices and unauthorized access attempts to Wi-Fi networks, identify of skimming devices, Identify unauthorized networks, connections, devices, unallowed connections and communications in the networks, etc.

Advantages:

- High sensitivity. The system is able to work with different type of antennas; detects and locates devices emitting weak signals or located at a long distance.
- Scans all available (existing) Wi-Fi channels regardless of the geographic area where the system operates.
- Very good capabilities for detection and network analysis.
- The system is able to register and analyze single short- term connections between different devices.
- The system is able to locate and register individual or paired Bluetooth devices.
- Modular architecture and easy replacement of damaged elements.
- Exceptional scanning, detection and signal recognition speed. The system is able to register and analyze single pings.
- Option to add modules with additional functionalities or develop of additional features at the client's request.
- The received data could be exported to standard text files or other format on customer's request.
- The BLS server is specifically developed for this system, as the received data could not be read with other applications.
- Targeted or total **jamming** of Wi-Fi and Bluetooth devices.

Specifications

Computer Operating System	Linux Debian
Operating range	Entire 2,4 GHz and 5 GHz Wi- Fi range. IEEE 802.11a/b/g/n Dual-Band Standard IEEE 802.11ax- Wi Fi 6 Standard
Frequency ranges	2.400 ~ 2.483GHz; 5.15 ~ 5.35GHz; 5.47~ 5.725GHz
Security protocols supported	64/128-bits WEP, WPA, WPA2, 802.1x
Recording Capacity per hour	around 1 MB (depending on the Wi-Fi intensity)
Supported Bluetooth	1.0; 1.1; 1.2; 2.0+ EDR; 2.1+ EDR; 4.0; 4.1; 4.2; 5.0; 5.1.
Sensitivity:	802.11bg: -93 dBm 802.11n HT20: -80 dBm 802.11n HT40: -75 dBm 802.11a: -93 dBm 802.11an HT20: -85 dBm 802.11an HT40: -74 dBm
Output power	28dBm@11bg 26dBm@11n HT20 25dBm@11n HT40 25dBm@11a 23dBm@11an HT20 21dBm@11an HT40
Running time on power adapter	unlimited
Running time on battery	up to 5 hours
Scanning speed	not less than 24 channels per second
Jamming range outdoors	aprox. 50 m.



Signal Acquisition Identification and Location TSCM Signal Analyzer S.A.I.L.

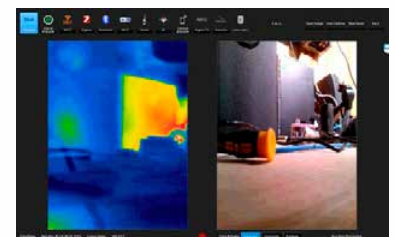
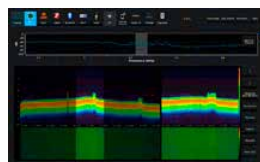
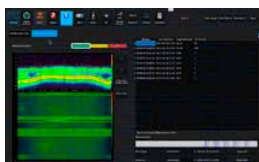
S.A.I.L. is a handheld portable Signal Analyzer designed by Technical Surveillance Countermeasure Practitioners with an idea of delivering the most comprehensive and practical solution for the actual TSCM professionals' needs. The device is much more than a Signal Analyzer. S.A.I.L. is a complete TSCM sweep service in one device which analyses all aspects of the spectrum in detail.



S.A.I.L. has a number of unique features that can rarely be found combined in a single compact device, such as Bluetooth and BLE devices detection and analysis, LTE direction find on uplink devices, identification of WIFI terminals with prevailing uplink traffic and much more. DETECT - ANALYSE - RESPOND The S.A.I.L. system is the only solution that offers all three. Here are some of its advanced capabilities.

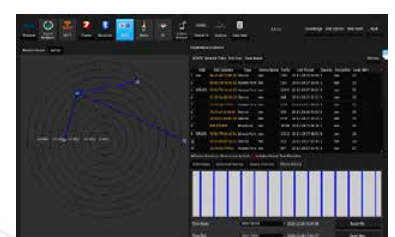
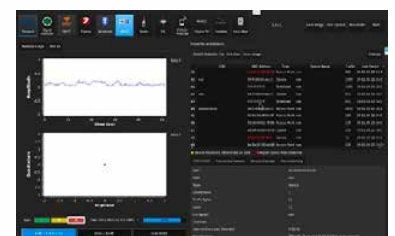
Capabilities:

- Signal Analyzer: Signal analysis 70 MHz to 6 GHz
- Directional Finding: Proprietary DF technique using pre-spaced antenna array
- GSM: Real time cellular analysis, passive interception of devices
- LTE: LTE analysis with the ability to directional find on uplink device
- Wi-Fi: Location analysis of devices and APs, identification of prevailing uplink traffic
- DECT: Automatic scans of DECT frequency's identifying base stations and mobile devices
- Bluetooth/BLE: Real time Bluetooth analysis of both passive and active devices
- Digital TV: Real time DVB / ATSC analysis
- Digital Analog Radio: Real-time Radio communication P25, NXDN, X2, DStar
- Zigbee Networks: Analysis of low power digital communication devices
- Tetra: 4 Channel analysis with audio demodulation
- Flir: Thermal and digital imaging
- Iridium: Real time Iridium satellite analysis



Specifications

ADC Sample Rate (Max)	61.44 MS/s
RF Detection Bandwidth	70 MHz - 6 GHz
RF Scanning Bandwidth - Single Channel	10 Khz-56 Mhz
RF Scanning Bandwidth - Multi Channel	10 Khz - 30.72 Mhz
RF Instantaneous Bandwidth	>80 Mhz
GPS module Channels	56 Searching Channel
GPS module Frequency	GPS L1, SBAS L1, QZSS L1
GPS module Receiving Format	GPS, SBAS, QZSS
5MP CAMERA Sensor	OV5640
5MP CAMERA FOV	72 degrees
FLIR CAMERA Function	Passive thermal imaging module for mobile equipment
FLIR CAMERA Sensor Technology	Uncooled VOx microbolometer
FLIR CAMERA Optical Temperature Range	-10...65 °C
Power	12V 5A
Battery life	5 h
Battery Charge Time	2 h
Weight	approx. 2.2 kg



■ Ultra-fast Scanning Spectrum Analyser

MERLIN MK4

Merlin MK4 is a high-end TSCM spectrum analyser with cutting-edge design and performance. The Merlin MK4 is tailored for Technical Surveillance Counter Measures (TSCM) use and features Shearwater's own receiver. The Merlin MK4 has two quad-core computers built-in, these operate Linux for the digitiser and Windows for the scan.

While offering rapid deployment and portability, Merlin MK4 can give an operator quick access to several tools, such as a Wi-Fi/Bluetooth spectrum monitor, SDR Demodulation and mains monitoring. The system is based on Ethernet control, consequently is ideal for remote deployment. The Waterfall (3D and 2D) displays can be recorded and replayed and provides both time and frequency read out.



Multi Platform. Two powerful, built in quad core computers allows graphical user interface. The unit is supplied with an tablet and 2 External Monitors as standard.

In addition to Ethernet cable, Wireless connection is provided for rapid deployment.

The unit is both battery and or mains powered.

Analogue and Digital Video demodulation is available.

BLUETOOTH monitoring runs while scanning the RF spectrum.

ID / MAC address and real time signal provides for location of the Bluetooth device.

External Antenna can be used and a Directional hand held (or tripod mount) is included for Direction Finding.

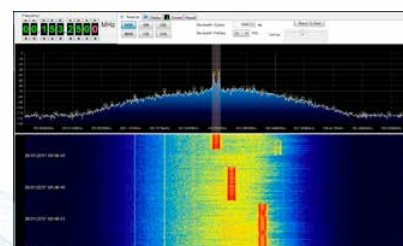
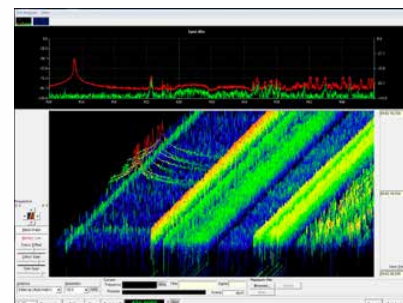
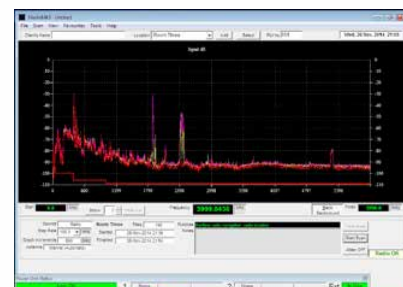
Mains / Cable monitoring input with a switchable interface: L/N, L/E, N/E.

Features:

- Compact all-in-one unit
- Band width up to 30 GHz
- Acquisition Rate 52 Terahertz per second
- Ethernet control
- Record / Replay 3D waterfall
- Cable or Wireless control
- Multi-format computer control (tablet supplied as standard)
- Hot Swap Battery / Mains powered
- Digital Video demodulation

Specifications

Tuning Range	50kHz to 30GHz
Tuning Resolution	10Hz
Signal Acquisition	52 Terahertz per second
Resolution Bandwidths (RBW):	5kHz to 5MHz (octave increments)
RF Input Range	+5dBm to Displayed Average Noise Level (DANL)
SDR Demodulation Modes	AM, FM Narrow, FM Wide, USB, LSB, (USER)
SDR Demodulation Audio Recording and Playback	yes
Simultaneous Record and SDR Demodulation:	yes
TV Modes	PAL AM, FM Positive, FM Inverted, DVBT, Optional ATSC
Bluetooth Standard:	4.1
Bluetooth Tuning Range:	2.38 to 2.52 GHz
2.4 to 2.5 GHz Spectrum Analyzer	Real-time Bluetooth and Wifi spectrum display
Noise Floor typical:	-95dBm
Dimensions Merlin unit	350 x 280 x 95mm
Weight Merlin unit	9kg



■ Acoustically Stimulated Microphone Detector

BLOODHOUND

Developed by the designers while in Government service Bloodhound is a fully portable acoustically stimulated microphone detection system. It operates by detecting the audio signal from a microphone and subjecting it to high amplification with elaborate filtering to remove extraneous noise.



Bloodhound can be used to detect the following types of espionage attack:

Primary

- Amplified wired microphone system where the target site is wired directly to a listening post.
- Audio attack on telephone instruments.
- Audio presence on cables

Secondary

- Radio Microphones - audio component
- Tape recorder attacks (many types)
- Video camera surveillance (many types)
- General purpose amplification, especially on very weak and noisy signals
- Cable tracing

System Components

- Probe and Antenna
- Belt-worn Filter
- Headset
- Power Amplifier
- Sound Source
- Robust Transit Case



Features:

Bloodhound can be used in Two modes, Covert (Passive) and Overt (Active):

■ Covert Mode (Passive). In this mode the operator uses the filter and headset units to listen for room noises as detected by the eavesdropping microphone. A properly conducted Covert search can be carried out in an environment with staff present and will not alert the listening post.

■ Overt Mode (Active). In this mode the power amplifier is added to the system. If the probe detects a microphone the system goes into acoustic feedback and a characteristic howl is produced.



Automatic Counter-surveillance RF Sweeping System (6GHz/ 18GHz)

THE STEALTH TEAM

Detects:

RF Bugging Devices:

- Cell Phones and Modems (CDMA 450, GSM 900, GSM 1800, 3G)*
- Wireless Data Transmitters (4G, 5G, WLAN, BLUETOOTH 2.4 and 5 GHz)
- Cordless Phone Systems (DECT) as well as Special Technical Devices Using These Data Transmission Standards
- Analog Radio Listening Devices

*The settings of cellular frequencies are provided depending on the country and mobile operator.

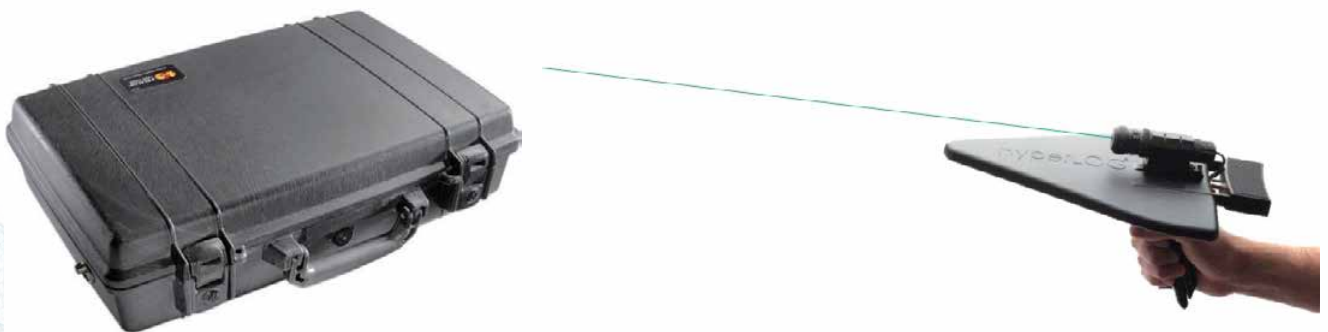


The Stealth TEAM uses a broadband log periodic antenna and analyzes Wi-Fi and Bluetooth signals for Mac addresses or SSIDs to find and remove illegal installations. In addition, when a spy phone works without your knowledge, you can prevent damages such as eavesdropping, information leakage, etc.

These areas include:

- VIP Rooms
- Meeting Rooms and Offices
- Exam Rooms and Testing Facilities
- Prisons and Correctional Facilities Areas with Limited Use of Cell Phones, Radios, etc.

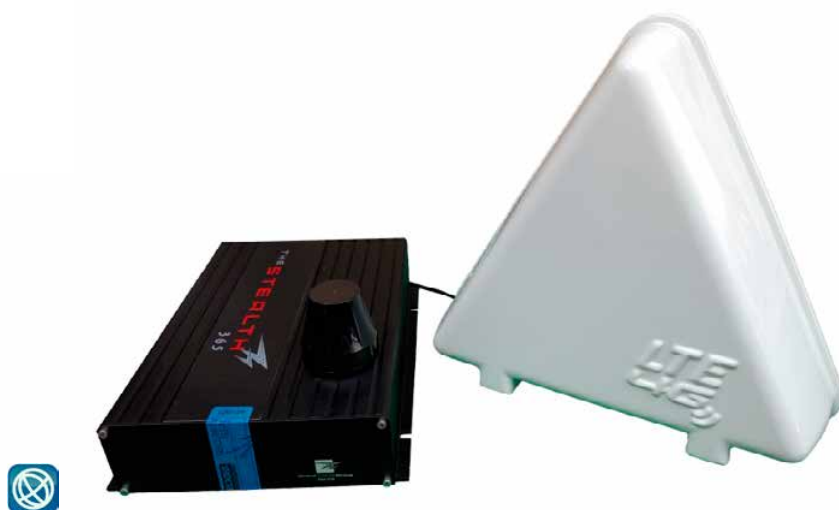
Particularly when a meeting is in progress in the VIP room and this equipment is operating, the security officer can check for abnormalities outside the meeting room. If an abnormal signal is detected, an SMS is simultaneously sent to the security officer.



■ Smartphone, Cell phone Detector with Real Time Monitoring Capability

THE STEALTH PRISON

The Stealth Prison detects illegal cell phone use in prison (in real time 24/7 and operator through the PC of the central control center or text messages to supervisor, because the location of the detected room can be known by ID. Prison guards can find cell phones by intensive search in that area. In other words, it is a product that enables practical monitoring even when the guards are not on patrol.



Detects:

- Cell phones and modems (CDMA450, GSM900, GSM1800, 3G)
- Wireless data transmitters (4G, WLAN, BLUETOOTH 2.4 and 5GHZ)

The main purpose of the system is the detection of unauthorized transmission of data in the area of surveillance:.

These areas include:

- Prison and correctional facilities
- Exam rooms and testing facilities
- Areas with limited use of cell phones, radios, etc.

Specifications

Frequency range	790-2700 MHz
Sensitivity	-90- -75 dBm
Interfaces	USB, ETHERNET, WLAN
Coverage	10-20 m2
*The Stealth Prison can be remotely operated via network for group monitoring up to 1000 units	

■ Bug Detector with Real Time Remote Monitoring Capability

THE STEALTH 24/7

System designed to protect from eavesdropping with RF transmitter and laser monitoring system. The Stealth 24/7 is a wide-band RF BUG scanning surveillance device built to detect illegal RF eavesdropping activities in a secured area 24/7. It can be operated directly on-site or remotely controlled and monitored at a central monitoring center via LAN / WLAN.



Suspected activities are immediately reported to the client or the security department through monitoring center. It can send a real time E-mail to the client when The Stealth 24/7 detects any suspected RF signal.

The main purpose of the system is the detection of unauthorized transmission of data in the area of surveillance.:

These areas include:

- VIP rooms
- Meeting rooms and offices
- Exam rooms and testing facilities
- Prisons and correctional facilities
- Areas with limited use of cell phones, radios, etc.

Functions

- Monitor of all frequency bands, results are directly read and determined;
- Control based on eavesdropping frequency database worldwide;
- Monitoring of digital devices such as FHSS;
- Mobile Communication (T Mobile, Verizon, AT&T) SPY APP;
- Selective detection Wi Fi, SSID;
- Tracking down the location of detected suspicious frequency and elimination;
- Indication of location of 'monitoring screen' - recording devices (More than 3 units);
- SMS messaging;
- Built in laser listening prevention circuit (Dual random number).

Detects:

- RF Bugging devices
- Cell phones and modems (CDMA450, GSM 900, GSM 1800, 3G)
- Wireless data transmitters (4G, WLAN, BLUETOOTH 2.4 and 5GHz)
- Cordless phone systems (DECT) as well as special technical devices using these data transmission standards
- Analog radio listening devices

*The settings of cellular frequencies, depending on the country and mobile operator, are provided.

Specifications

Frequency Range	25-6000 MHz
Sensitivity	-90...-75dBm
Interfaces	USB, ETHERNET, WLAN
Coverage	10-50m ²
Random White Noise Generation	2CH
Transducer	up to 8
Storage of event signal	E-mail alert
Dimensions	245x190x55mm

*The Stealth 24/7 can be remotely operated via network for group monitoring up to 1000 units

■ Optical camera detector

OPTIC-2

Optical camera detector Optic-2 is designed to detect and locate hidden (camouflaged in the interior) video cameras such as “pinhole”, regardless of their status (on/off) and the type of video signals.

The detection method implemented in the “Optic-2” is based on the optical detection and allows to detect video cameras due to the effect of reverse reflection or “reverse blink”. Upon detection of a hidden camera you will see a green or red dot in the Optic-2 lens as a result of reflection. The detector is designed as a binoculars in rubberised metal housing.



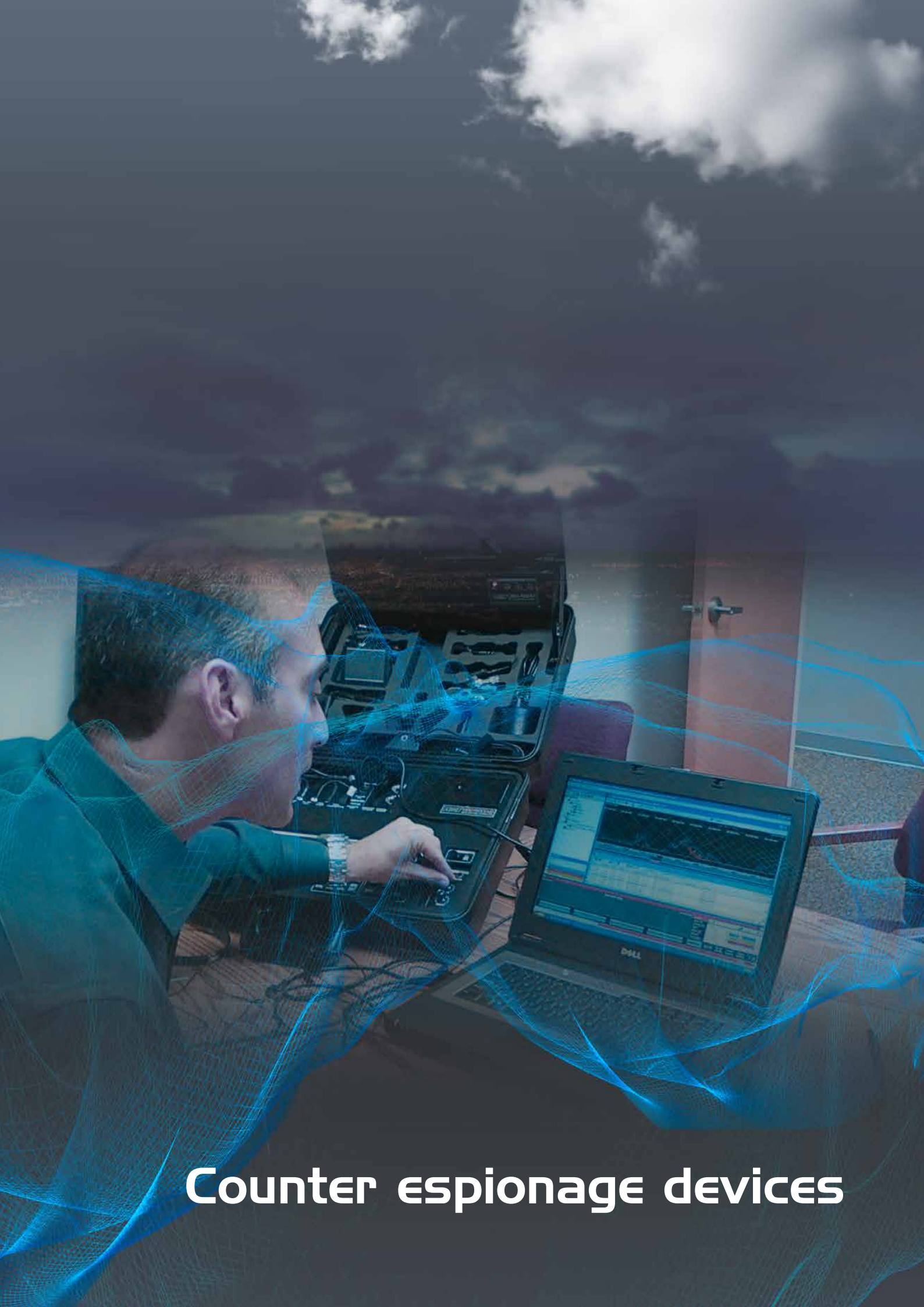
Features

- The detector allows to inspect the objects more qualitatively;
- Less stress for the operator when compared with monoculars (no need to close one eye);
- The green LED light allows to detect cameras, which are protected by special filters, which are being used to bypass the detection based on red light;
- Built-in battery allows not to worry about battery cells;
- 6.5x / 8,5x zoom lets you inspect the smallest details and hardly reachable elements of the interior;
- Detector Optic-2 is safe for short-term direct illumination in the eye as laser light is not used.



Specifications

Detection range (depending on light conditions)	0.5... 50 m
Angle of view	6° / 7.5°
Zoom	6,5x / 8,5x
Focusing range	0,5m to ∞
Operating modes	pulse (green, red, both) / continuous (green, red)
Power supply	built in Li-ion 3.6 V battery
Type of light	22 pcs. of LED
Weight in operation/transportation	450/800 g
Operating time in pulse/continuous mode	4 h / 6 h



Counter espionage devices

■ Acoustic Safe Standard Model

PROSAFE STANDARD

The purpose of the acoustic safe is to block the audio access of mobile phones/recorders/dictaphones, etc. (devices with microphone) during meetings, conferences, confidential conversations or situations where it is important to take precaution against eavesdropping via recording devices.

The Acoustic safe generates several types of noises/sounds: White noise, Speech like noise, Metronome, Rhythmic sound.



The Acoustic safe could also be **EM (electromagnetic) Shielded** (option). In this case the devices in the Acoustic safe are completely blocked and they are not connected to the mobile network (they lose connection to the mobile operator network, with Bluetooth handsfree, smart watches, Wi-Fi devices).

The EMI Shielded Acoustic safe blocks all standards below:

- CDMA, 2G, 3G, 4G, 5G
- DECT
- Wi-Fi- 2,4 GHz, 5 GHz
- Bluetooth
- Blocked frequencies- 450 MHz to 5800 MHz

Easy to use: Just put the device (mobile phone) in the Acoustic safe, switch the Acoustic safe on (adjust the sound level and sound type) and close the lid. The devices in the box don't have audio and video access to the conversation and it is not possible to record it. In the same time you can hear if someone calls you and decide whether to accept the call or not. Thus you don't have to leave the mobile phones outside the room, switch them off or remove the batteries.



Specifications

Acoustic attenuation	>=35 dB
Acoustic jamming	>=50 dB (inside the box)
White noise	2 types
Speech like noise	2 types
Metronome	2 types
Rhythmic sound with different sound frequencies	1 type
Output power	350mW
Loudspeaker	36 ohm, 500mW
Consumption at max. noise level-	no more than 35mA
Adjusting the noise level	smoothly with control knob
External size (WxLxH):	33x24x15 cm
Color	natural light wood, brown (walnut), gray, white, black, etc
Locks	with or without
With compartments for each phone	optional
Power supply	9V 6F22 battery (non- rechargeable) or NiMH accumulator (rechargeable)- (optional)
Battery life (at max. noise level)	not less than 5 hrs./ at minimum noise level- over 10 hrs

■ Acoustic Safe Portable Model

PROSAFE PORTABLE

Portable Acoustic safe for offices, vehicles, etc. (for 6 mobile phones). The purpose of the acoustic safe is to block the audio access of mobile phones/recorders/dictaphones, etc. (devices with microphone) for offices, vehicles. The Acoustic safe generates several types of noises/ sounds: White noise, Speech like noise, Metronome, Rhythmic sound.



The Acoustic safe could also be **EM (electromagnetic) Shielded** (option). In this case the devices in the Acoustic safe are completely blocked and they are not connected to the mobile network (they lose connection to the mobile operator network, with Bluetooth handsfree, smart watches, Wi-Fi devices).

The EMI Shielded Acoustic safe blocks all standards below:

- CDMA, 2G, 3G, 4G, 5G
- DECT
- Wi-Fi- 2,4 GHz, 5 GHz
- Bluetooth
- Blocked frequencies- 450 MHz to 5800 MHz

Easy to use: Just put the device (mobile phone) in the Acoustic safe, switch the Acoustic safe on (adjust the sound level and sound type) and close the lid. The devices in the box don't have audio and video access to the conversation and it is not possible to record it. In the same time you can hear if someone calls you and decide whether to accept the call or not. Thus you don't have to leave the mobile phones outside the room, switch them off or remove the batteries.



Specifications

Acoustic attenuation	>=35 dB
Acoustic jamming	>=50 dB (inside the box)
White noise	2 types
Speech like noise	2 types
Metronome	2 types
Rhythmic sound with different sound frequencies	1 type
Output power	350mW
Loudspeaker	36 ohm, 500mW
Consumption at max. noise level-	no more than 35mA
Adjusting the noise level	smoothly with control knob
Material of the box	MDF covered with Alcantara (synthetic suede-like durable textile material) in black or gray color.
External size (WxLxH):	33x24x15 cm
Locks	2 side locks
With compartments	for 6 mobile phones, positioned aside
Side locks	2 side locks
Handle	positioned on the back of the Acoustic safe. In this situation the Acoustic safe could be locked in the middle of the back seat of the vehicle with the seat belt and thus it will be secured.
Power supply	9V 6F22 battery (non- rechargeable) or NiMH accumulator (rechargeable)- (optional)
External power supply	12V, 12v DC charger, car charger
Battery life (at max. noise level)	not less than 5 hrs./ at minimum noise level- over 10 hrs

■ Protection Box

SI, S2, S6

Protection Box - a simple, innocent, tool with high technological content. Developed to protect all the sensitive conversations we “produce” on a daily basis. During meetings, at the office, at the hotel, in the car, at work, with clients, colleagues, associates, alone in smartworking ... Confidentiality is guaranteed, by simply inserting the participants’ smartphones into their security box, which is active and operational. The constant emission of artificial interference imperceptible from the outside blocks any attempt of espionage. A new way to manage your meetings, to deal with sensitive subjects, in total confidentiality, security and freedom!



Features

- An elegant small-sized box in precious wood, suitable for any smartphone model (cm 13 x 22 x 5).
- Stochastic active jamming.
- Comfortably at hand
- Internal black velvet case to hold the Smartphone
- Possibility on request to personalize the box with the name of the owner written by hand
- Long battery life, up to 20 days
- Fast charging via USB port. With 2 hours of recharge, can operate up to 96 consecutive hours

Models

- S1 - Protection Box. Protection for one smartphone.
- S2 - Protection Box. Protection for two smartphones.
- S6 - Protection Box. Protection for six smartphone.



■ Advanced Digital Noise Generator

THE STEALTH DNG-2300

The Stealth DNG-2300 is designed to prevent listening using bugs that cannot be detected by conventional countermeasures and are installed around the perimeter of a room – wired wall microphones, contact microphones, window systems based on the reflection of laser/infrared/microwave beams. It is an excellent addition to high level countermeasures.



The Stealth DNG-2300 uses a combination of transducers and speakers placed strategically throughout a target area to create a blanket of masking noise that covers private conversations from eavesdropping. Each transducer utilizes adapters for mounting to a variety of surfaces such as walls, windows, ductworks, plumbing, etc. The three separate channels allow the user to tailor the noise for separate materials, allowing greater flexibility and increased protection.

Device produces non-filterable acoustic noise which is transferred to constructions by transducers and speakers. TRN-600 is the recommended transducer. It has optimal power parameters and can be set on different types of surfaces. The TRN-600 injects most of its power into surfaces while only a tiny part of the noise gets inside a room. This does not force people to speak louder. The TRN-600 transducer can be supplied with adapters for mounting on walls, ceilings, windows, etc.

The speaker OMS-2000 is used with the Stealth DNG-2300. It does not inject the noise into the surfaces but radiates it into surrounding space. The OMS-2000 is usually used in air ducts, ceiling tiles, etc.

Protects from

- Electronic stethoscopes (contact microphones)
- Microphones built in the walls or other constructions
- Laser and microwave surveillance systems using reflections from the windows
- Other vibro-acoustic ways of information's leakage

The Stealth DNG-2300 is supplied with AC power cable and user manual. The TRN-600 and the OMS-2000 are sold separately. Their quantity depends on the room size and the situation.

Specifications

Digital Noise Generator DNG-2300	
Power source	110-220V, 50 60Hz
Dimensions	6×17.5×25.4cm
Weight	2.2 Kg
Output channels	2x for TRANSDUCERS, 1x for SPEAKERS
Peak output voltage 12V	12V
TRANSDUCERS output (2)	
Max. output power:	2 × 10W
Frequency response:	180-5600 Hz
Min. impedance of load:	3 Ohm
Recommended transducer:	TRN 600
Max. quantity of transducers per channel:	24 (light structures); 12 (solid structures)
SPEAKERS output	
Max. output power:	1 × 8W
Frequency response:	180-7000 Hz
Min. impedance of load:	8 Ohm
Recommended speaker:	OMS2000
Max. quantity of speakers:	12



3CH White Noise Generator Generator

THE STEALTH LA5000

3CH White Noise Generator with Centralized Control Function. Preventing LASER Eavesdropping Via Windows



Laser Eavesdropping Doesn't Just Happen in Movies

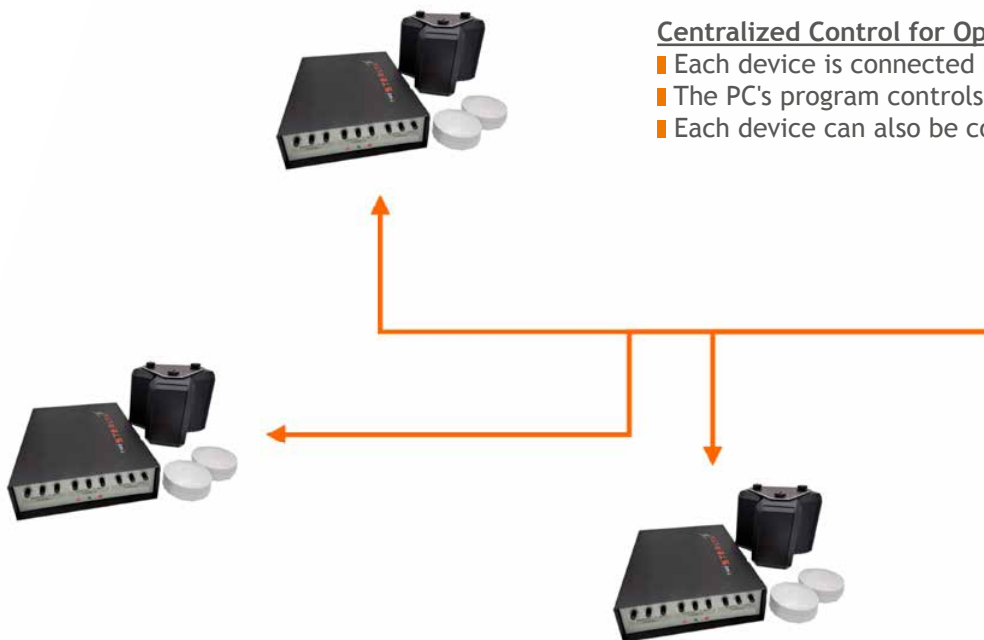
- There's no way to know if they're eavesdropping
- It proceeds stealthily within visibility

The best way to protect the windows

- Prevent Eavesdropping by Creating Noise in the Windows
- Stick the transducers to the window
- Make white noise indoors

Centralized Control for Optimal Management

- Each device is connected by Ethernet in a building
- The PC's program controls each devices individually
- Each device can also be controlled by remote controller



Control S/W Windows PC

- On/Off Control
- Volume Control
- Status Monitoring

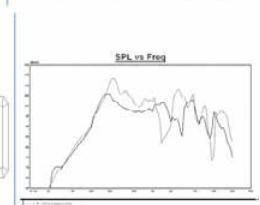
Specifications

Frequency response	50 Hz
Output	3x10W
Max TRN-600 transducers supported	16, using 2 output channels (2x8)
Max OMS-2000 speakers supported	4, using 1 output channel
Min. impedance of load	3 Ohm
Equalizer	LF: 180Hz + 12dB, HF: 3KHz +12dB
Port	10/100 Base T Ethernet (8pin RJ45)
Output adjustment	100 step
Size	50x70x243mm
Weight	1.5Kg
Power Supply	100 240VAC 19VDC 2A

TRANSDUCER (WALL, GLASS)



TRANSDUCER



■ Portable Speech Protection System

THE STEALTH DRUID D-06

Not all listening devices can be detected by existing methods. The DRUID D-06 is a unique system for providing protection of human's speech by generating audio interference, which cannot be cleared by any noise clearance methods. At the same time the produced interference does not create any inconvenience to the participants of the negotiation thanks to the special headsets. The DRUID headset allows users to hear each other with crystal clear quality.



Features

- Professional system for protecting speech between up to 6 persons
- Protects against all known methods of listening, including all types of radio microphones, stethoscopes, voice recorders, passive resonators, wired microphones, etc.
- The system uses usual multimedia headsets. 4 headsets PLANTRONICS AUDIO 355 included in the standard set
- Absolutely harmless to your health: no microwave reflections or ultrahigh sound noise
- Compared to a white noise generator the DRUID provides a much higher level of protection;
- The system is portable: supplied in a plastic carry case it can be easily prepared for use;
- Powered from an internal rechargeable battery the DRUID D-06 can work for up to 5 hours without mains supply;
- The system can be used in any situation, it is especially valuable when conducting highly important negotiations in an unknown environment.



Specifications

Type of noise	Distortion+Reverberation
Number of channels	6
Power source	AC 220V / rechargeable battery
Duration of work from internal battery	4-5 hours
Dimensions	23x6.5x17cm

■ Jammer of microphones and audio recorders

SEL ULTRA MAX

SEL ULTRA MAX is a unique and effective ultrasonic device used to protect classified information, based on special algorithm of generating of the digital ultrasonic jamming signal. Device effectively protects confidential conversations, conferences, business conferences and secret meetings against eavesdropping and recording with any voice recorders.



SEL ULTRA MAX is characterized by solid construction and simplicity of use. The briefcase is not opened, and the access code is only a visual addition. It is a device dedicated to businessmen who care about the discretion of any conversations or business negotiations.



Application

Device effectively blocks wiretaps, voice recording and microphones in a distance from 1 to 30 metres such as:

- microphones in cell phones;
- digital recorders of the sound with the built-in microphone or the microphone on the cable;
- professional digital dictaphones of the type : EDIC-the mini, Gnome, Olympus, Papyrus...;
- dictaphones built-in in Smartphones of the type the Iphone, HTC, SONY , LG, SAMSUNG...;
- radio microphones, microphones of recorders audio-the video;
- microphones of cameras, bugging microphones;
- professional dictaphones hidden in cards to ATMs;
- older and newer dictaphones, recorders in the metal-housing.

Ultrasonic Jammer SEL ULTRA MAX prevents also to leakages of the information by means of buggings analog, digital, optical and seismic wiretaps. Jammer is built in into the elegant briefcase, one can him freely and conveniently carry.

Features

- Type of work: proprietary algorithm for generating interference using a digital ultrasonic signal;
- The radio remote control turns on and off;
- Charging and battery status indicator;
- Quiet operation - does not emit an audible and troublesome sound;
- Simple operation and use.

Specifications

Max range: depending on the type of voice recorder, wiretapping	1-30 meters
Directionality	horizontal and vertical planes 80°
The built-in effective battery + the power supply	110-230 V
Battery life	8-9 hours
Maximum continuous operating time	3 hours, break time 30 minutes.
Charging time	8 hours
Remote control	switching on/off, the range ~40 meters
Wireless remote control	work frequency 433.92 MHz in the ISM band
Weight	7,5 kg,
Operating temperature	0°...+40° C (32-104 Fahrenheit)
Dimensions	length 45,5 cm. height 38 cm. thickness 12 cm.

■ Jammer of microphones and audio recorders

SEL ULTRA

SEL ULTRA is a unique and effective ultrasonic device used to protect classified information, based on special algorithm of generating of the digital ultrasonic jamming signal. Device effectively protects confidential conversations, conferences, business conferences and secret meetings against eavesdropping and recording with any voice recorders.



SEL ULTRA is characterized by solid construction and simplicity of use. The briefcase is not opened, and the access code is only a visual addition. It is a device dedicated to businessmen who care about the discretion of any conversations or business negotiations.



Application

Device effectively blocks wiretaps, voice recording and microphones in a distance from 1 to 23 metres such as:

- microphones in cell phones;
- digital recorders of the sound with the built-in microphone or the microphone on the cable;
- professional digital dictaphones of the type : EDIC-the mini, Gnome, Olympus, Papyrus...;
- dictaphones built-in in Smartphones of the type the Iphone, HTC, SONY , LG, SAMSUNG...;
- radio microphones, microphones of recorders audio-the video;
- microphones of cameras, bugging microphones;
- professional dictaphones hidden in cards to ATMs;
- older and newer dictaphones, recorders in the metal-housing.

Ultrasonic Jammer SEL ULTRA prevents also to leakages of the information by means of buggings analog, digital, optical and seismic wiretaps. Jammer is built in into the elegant briefcase, one can him freely and conveniently carry.

Features

- Type of work: proprietary algorithm for generating interference using a digital ultrasonic signal;
- The radio remote control turns on and off;
- Charging and battery status indicator;
- Quiet operation - does not emit an audible and troublesome sound;
- Simple operation and use.

Specifications

Max range: depending on the type of voice recorder, wiretapping	1-23 meters
Directionality	horizontal and vertical planes 80°
The built-in effective battery + the power supply	110-230 V
Battery life	~4 hours
Maximum continuous operating time	3 hours, break time 30 minutes.
Charging time	5 hours
Remote control	switching on/off, the range ~20 meters
Wireless remote control	work frequency 433.92 MHz in the ISM band
Weight	5,9 kg,
Operating temperature	0° ...+40° C (32-104 Fahrenheit)
Dimensions	length 46 cm. height 38 cm. thickness 13 cm.

■ Jammer of microphones and audio recorders

SEL OMNI TOWER

SEL OMNI TOWER is a unique and effective ultrasonic device used to protect classified information, based on special algorithm of generating of the digital ultrasonic jamming signal. Device effectively protects confidential conversations, conferences, business conferences and secret meetings against eavesdropping and recording with any voice recorders.



Application

SEL OMNI TOWER effectively blocks wiretaps, voice recording and microphones in rooms about the area about 30-40 m2 such as:

- microphones in cell phones;
- digital recorders of the sound with the built-in microphone or the microphone on the cable;
- professional digital dictaphones of the type : EDIC-the mini, Gnome, Olympus, Papyrus...;
- dictaphones built-in in Smartphones of the type the Iphone, HTC, SONY , LG, SAMSUNG...;
- radio microphones, microphones of recorders audio-the video;
- microphones of cameras, bugging microphones;
- professional dictaphones hidden in cards to ATMs;
- older and newer dictaphones, recorders in the metal-housing.



Ultrasonic Jammer SEL OMNI TOWER prevents also to leakages of the information by means of buggings analog, digital, optical and seismic wiretaps. The product is used for stationary work in rooms on a conference table, desk, etc.

Features

- Type of work: proprietary algorithm for generating interference using a digital ultrasonic signal;
- The radio remote control turns on and off;
- Charging and battery status indicator;
- Quiet operation - does not emit an audible and troublesome sound;
- Simple operation and use.

Specifications

Max range: depending on the area	30-40 m2
Directionality	in the horizontal plane 360 ° in the vertical plane 105 °
Operating frequency	23-260 kHz
The built-in effective battery + the power supply	110-230 V
Battery life	3 hours
Maximum continuous operating time	3 hours, break time 30 minutes.
Charging time	5 hours
Remote control	switching on/off, the range ~20 meters
Wireless remote control	work frequency 433.92 MHz in the ISM band
Weight	5 kg,
Operating temperature	0°...+40° C (32-104 Fahrenheit)
Dimensions	height 37 cm, diameter 16 cm.



■ Jammer of microphones and audio recorders

SEL OMNI TOWER MINI

SEL OMNI TOWER MINI is a unique and effective ultrasonic device used to protect classified information, based on special algorithm of generating of the digital ultrasonic jamming signal. Device effectively protects confidential conversations, conferences, business conferences and secret meetings against eavesdropping and recording with any voice recorders.

Application

SEL OMNI TOWER MINI effectively blocks wiretaps, voice recording and microphones in rooms in the distance of 1-3m such as:

- microphones in cell phones;
- digital recorders of the sound with the built-in microphone or the microphone on the cable;
- professional digital dictaphones of the type : EDIC-the mini, Gnome, Olympus, Papyrus...;
- dictaphones built-in in Smartphones of the type the Iphone, HTC, SONY , LG, SAMSUNG...;
- radio microphones, microphones of recorders audio-the video;
- microphones of cameras, bugging microphones;
- professional dictaphones hidden in cards to ATMs;
- older and newer dictaphones, recorders in the metal-housing.

Ultrasonic Jammer SEL OMNI TOWER MINI prevents also to leakages of the information by means of buggings analog, digital, optical and seismic. The product is used for stationary work in rooms on a conference table, desk, etc.

Features

- Type of work: proprietary algorithm for generating interference using a digital ultrasonic signal;
- The radio remote control turns on and off;
- Charging and battery status indicator;
- Quiet operation - does not emit an audible and troublesome sound;
- Simple operation and use.

Specifications

Jamming distance	1-3 meters
Directionality	in the horizontal plane 360 ° in the vertical plane 85 °
Operating frequency	23-260 kHz
The built-in effective battery + the power supply	110-230 V
Battery life	1 hour
Maximum continuous operating time	3 hours, break time 30 minutes.
Charging time	3 hours
Remote control	switching on/off, the range ~20 meters
Wireless remote control	work frequency 433.92 MHz in the ISM band
Weight	2 kg,
Operating temperature	0°...+40° C (32-104 Fahrenheit)
Dimensions	height 12 cm, diameter 16 cm.



■ Jammer of microphones and audio recorders

SEL PANEL ULTRA MAX

SEL PANEL ULTRA MAX is a unique and effective directional ultrasonic device used to protect classified information, based on special algorithm of generating of the digital ultrasonic jamming signal. Device effectively protects confidential conversations, conferences, business conferences and secret meetings against eavesdropping and recording with any voice recorders.



Panel can be placed on a desk or hung on the wall. It is a device dedicated to business people who care about the discretion of any conversations or business negotiations in offices or conference rooms.

Application

Device effectively blocks wiretaps, voice recording and microphones in a distance from 1 to 10 metres such as:

- microphones in cell phones;
- digital recorders of the sound with the built-in microphone or the microphone on the cable;
- professional digital dictaphones of the type : EDIC-the mini, Gnome, Olympus, Papyrus...;
- dictaphones built-in in Smartphones of the type the Iphone, HTC, SONY , LG, SAMSUNG...;
- radio microphones, microphones of recorders audio-the video;
- microphones of cameras, bugging microphones;
- professional dictaphones hidden in cards to ATMs;

Ultrasonic Jammer SEL PANEL ULTRA MAX prevents also to leakages of the information by means of buggings analog, digital, optical and seismic wiretaps. The jammer is designed for stationary indoor applications.

Features

- Type of work: proprietary software for generating digital ultrasonic jamming signal;
- The radio remote control turns on and off;
- Operation indicator;
- Quiet operation - does not emit an audible and troublesome sound;
- Simple operation and use.

Specifications

Max range: depending on the type of voice recorder, wiretapping	1-10 meters
Directionality	horizontal and vertical planes 90°
Power supply	mains adapter 110-230V
Maximum continuous operating time	3 hours, break time 30 minutes.
Remote control	switching on/off, the range ~20 meters
Wireless remote control	work frequency 433.92 MHz in the ISM band
Weight	2 kg,
Operating temperature	0° ...+40° C (32-104 Fahrenheit)
Dimensions	length 43 cm. height 33 cm. thickness 3,5 cm.



■ Jammer of microphones and audio recorders

SEL 08

SEL 08 is a small size portable microphone jammer in cell phones, audio recorders for personal use that helps protect confidential audio information during conversations in indoor meetings, outdoors or inside the car. It can be easily and quickly installed inside a car, on or under a conference room table, or built into a briefcase or purse. Despite its small size, SEL 08 is a highly effective jamming device, producing a complex jamming signal in the ultrasonic band above the point of human hearing.

Array of 8 high quality ultrasonic transducers controlled by a microprocessor achieving the best possible jamming efficiency and making any microphone recorded speech signal unintelligible to listen to.



Application

Device effectively blocks wiretaps, voice recording and microphones in a distance from 0,5 to 4 metres such as:

- microphones in cell phones;
- digital recorders of the sound with the built-in microphone or the microphone on the cable;
- professional digital dictaphones of the type : EDIC-the mini, Gnome, Olympus, Papyrus...;
- dictaphones built-in in Smartphones of the type the Iphone, HTC, SONY , LG, SAMSUNG...;
- radio microphones, microphones of recorders audio-the video;
- microphones of cameras, bugging microphones;
- professional dictaphones hidden in cards to ATMs;

Features

- Type of work: proprietary software for generating digital ultrasonic jamming signal;
- The radio remote control turns on and off;
- Charging and battery status indicator;
- Quiet operation - does not emit an audible and troublesome sound;
- Simple operation and use.

Specifications

Max range: depending on the type of voice recorder, wiretapping	0,5-4 meters
Directionality	horizontal and vertical planes 85°
Power supply	built-in internal accumulator Li-ion / the power supply 5V/110 230V
Maximum continuous operating time	4-5 hours, break time 30 minutes.
Battery life	4-5 hours
Charging time	3 hours
Remote control	switching on/off, the range ~20 meters
Wireless remote control	work frequency 433.92 MHz in the ISM band
Weight	0,5 kg,
Dimensions	20x12x4 cm
Operating temperature	0° ...+40° C (32-104 Fahrenheit)

■ Jammer of microphones and audio recorders **INFRATORNADO®**

Infratornado® is an innovative device in the field of information security. Based on the system to generate jamming signals dynamically changing (variable) in the time. Effectively protects against eavesdropping and recorders. Protect confidential conversations, meetings, business conferences and secret meetings against eavesdropping.



Application

Infratornado® effectively blocks most of the different listening devices the average distance of about 0,5...3 meters, such as:

- Cassette recorders, older mobile phones such as: Nokia, Samsung,...;
- Analog recorders with built-in microphone or a microphone on cable;
- Digital audio recorders that can be found on the market;
- Professional types digital voice recorders: EDIC-mini, Gnome, Olympus, Gnome DR, Papyrus...;
- Smartphones, including iPhones, HTC, Sony, LG, SAMSUNG, iPad...;
- Wireless microphones, microphones, audio and video recorders;
- Microphones wireless cameras, microphones bugs;
- Professional digital voice recorder in the Bank card;
- Older and newer recorders and recorders in a metal housing.

Jammer Infratornado also prevents leakage of information through wiretaps analog, digital and stethoscopes. The product is camouflaged in a briefcase and has the ability to be stationary and mobile.

Features

- Type of work: System generates jamming signals, which are dynamically changing (variable) in the time;
- Silent (For most people practically inaudible from a distance of one meter from the device);
- Automatic disconnection from the external power supply when the battery is fully charged;
- Simple operation and maintenance.

Specifications

Directionality generators:	
horizontal plane	60°
in a vertical plane	60°
Power supply	built-in battery or AC adapter 110-230 V
Operating time with built-in battery	up to 6 hours
Charging time	6 hours
Weight	7 kg
Operating temperature range	0°...+40° C (32-104 Fahrenheit)
Size	44x33x10 cm

■ Jammer of microphones and audio recorders ZERO

ZERO is a device used for effective protection of rooms (conference halls, offices, rooms for meetings etc.) against the possibility of eavesdropping on talks that take place in them and that constitute official, business or private secrets. ZERO emits inaudible acoustic signal, in fragmentary narrow bands of acoustic and ultra acoustic sound.



The components of the emitted sound are mixed in a randomly variable way, with the aid of specially developed algorithm. This signal acts physically on microphones of audio devices, causing their resonance, thus making impossible the clear recording or playing back of all kinds of received acoustic signals.

In particular ZERO blocks the operation of analogue and digital eavesdropping devices, dictaphones, voice recorders built into mobile phones, etc. The emitted interfering signal has all round feature (360 °°) with the guaranteed jamming of all types of listening and recording devices effectiveness within 2 m radius from the GTG ZERO

- ZERO device should be placed in the middle of the table, where sit people running conversation.
- Other placement of the device result in limiting the possibility of effective jamming. In the case of large tables, it is recommended to use two or more ZERO devices

Specifications

The range of frequencies generated	25,5 26,5 kHz
Signal level:	117dB
jamming radius	2 m, 360
Power	12V/220V/230V 50HZ
Weight	5 kg
Dimensions	diameter 230mm; height 110 mm
Continuous operation time with battery	2 hours
Continuous operation time with 230V AC power supply	5 hours
Automatic shut off	after 2 hours of operation

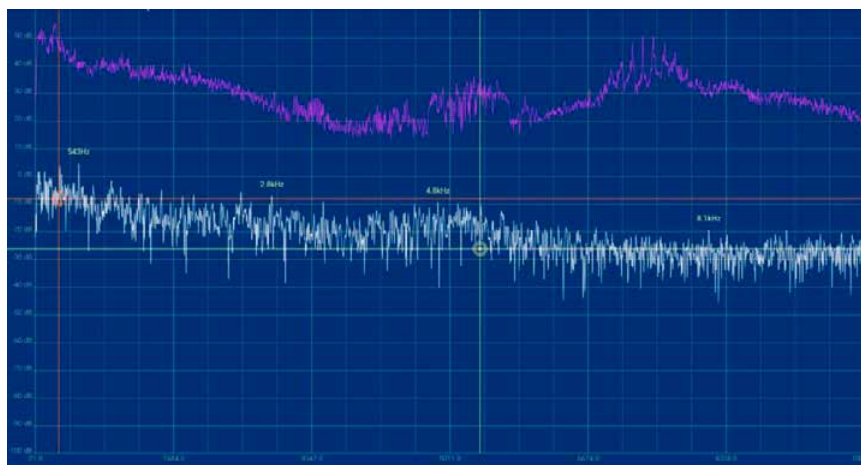
■ Jammer of microphones and audio recorders 20MJ20

The Ultrasonic Microphone Jammer is a set of two separate emitters, operating synchronously and at different frequencies, respectively 25 KHz and 32 KHz with different modulating signal (white noise).



The transmitters can work separately as a stand-alone jammers. The best effect however is when they work together. Based on our experience however we would recommend using two sets- one set on the table, the second one under the table.

The jammer works at 220V. In case of voltage failure or when used in a place without power supply, the jammer can operate through the built-in batteries. The operation time by full charged batteries is not less than 5 hours. The jamming range depends on the type of the microphone and its design. The optimal microphone jamming is obtained at 0-2 meters and 60 degree angle in front of the emitters. Highly sensitive microphones can be blocked at up to 11 meters distance. Size of one device- 220x160x66 mm



*Spectrogram of the two transmitters working simultaneously.
In purple is the level of the jammer compared to the standard noise in the room, depicted in white.*

The set includes:

- Jamming device- 2 pcs.
- Power supply 5V- 2 pcs.
- Remote control- 2 pcs. The remote control can be programmed to work with up to 4 devices.
- Warranty- 12 months.

Multifunctional noise generator

MNG-06

MNG-06 is a small, compact, highly efficient and multifunctional noise generator, which aims to neutralize eavesdropping and hidden audio recorders, as well as to help detecting such.



The device generates several types of sounds, each of which is used for different TSCM activities:

White noise- 2 types

Purpose: 1. To block the mics and ensuring confidentiality of the conversations/ meetings. Frequency-optimized white noise generated by the Acoustic safe covers all frequencies of the human voice.

Speech like noise- 2 types

Purpose:

1. To block the mics and ensuring confidentiality of the conversations/ Speech like noise generated by the Acoustic safe covers all frequencies of the human voice.
2. Evaluation the sound permeability through various barriers and protections.

Metronome- generates sharp rhythmic sound with different octaves- 2 types

The use of the Metronome sound mode is recommended together with TSCM devices that in addition to the spectrum analyzer have also oscilloscope- it monitors the similarity between the metronome clicking sound and the oscillation of the oscilloscope graph.

Purpose:

1. To evaluate the sound permeability through various barriers and protections.
2. To activate VOX (voice activated) microphones.
3. To assess the relevance of intercepted radio signal to the sounds it the inspected room.

Octave (rhythmic)- sound with different sound frequencies- 1 type

Purpose:

1. To assess the permeability of sound through different barriers (walls, pipes, air ducts, etc.) and protections. When the lid is open and the Acoustic safe is switched on and set to sound Octave mode, it could be checked with different microphones or to be heard without any special equipment (naked ear) if the different sounds (frequency ranges) pass through the barriers or through the wiring installation or air ducts, pipes, windows, etc.
2. Search hidden activate VOX (voice activated) microphones. Using Octave sound mode activates the VOX microphones because it creates sounds in a wide frequency range. In addition, the sound is easily recognizable at possible detecting and hearing the sound from a radio microphone.

If required up to 6 external piezoelements (transducers) can be connected. Piezoelectric elements are normally stuck on the window glass or installed on the room wall, pipes or air ducts. Very efficient transfer of audio frequency noise vibrations ensures much higher noise on the target surface then any vibrations produced by conversation in a room.

- Wall- each piezoelement cover 1,5 x 1,5m frame on the wall.
- Windows- each window or 1,5 x 1,5m frame
- Each pipe/ air ducts

Specifications

Output power	350mW
Loudspeaker	36 ohm, 500mW
Consumption at max. noise level	no more than 35mA
Adjusting the noise level	smoothly with control knob
Switching between different types of sounds	by pressing the VOLUME knob
External power supply	12V
3,5mm jack for external transducers (piezoelements)	optional
Power	9V 6F22 non-rechargeable battery or NiMH accumulator battery in battery holder
Battery charge time	16 hours
Battery life (at max. noise level)	not less than 4 hrs./ at minimum noise level- over 8 hrs.
Low battery indication	below 7,3V
Size of the box	123x88x29 mm
Build-in protections	<ul style="list-style-type: none"> - Self-discharge protection (batt. discharg via PCB or the external power supply) - Short circuit protection - Protection against reverse polarity of the external power supply or the battery.

Contacts

Europe

JSC SELCOM SECURITY
Office No 525, 5th floor,
Silutes pl. 2,
Klaipeda 91111,
Lithuania

Phone +370 46 441353
Mob. +370 655 08288; +37065508286
Fax +370 46 412231
E-mail info@selcomsecurity.com
Website: www.selcomsecurity.com

